

Software-Based Smart Irrigation with Plant Disease Prediction

AMIRTHASRI M¹, MAHALAKSHMI N², DIVYA S³

^{1, 2, 3}Computer Science and Engineering, Velammal Engineering College

Abstract- The core objective of this work is to empower farmers with smarter decision-making tools through a technology-driven irrigation platform built entirely on software. By applying image analysis techniques to user-submitted photographs, the system can recognise plant health issues and generate actionable guidance. Alongside disease identification, the platform evaluates key environmental variables — including temperature, relative humidity, and precipitation levels — to determine whether crop watering is warranted at any given time. Beyond water management, the system advises farmers on which crop varieties are most suitable for their conditions. It also serves as an early-warning mechanism, flagging potential crop health risks before visible damage occurs, enabling timely preventive intervention. Routine agricultural choice— such as deciding whether to water a specific field on a given day — are automated through data-driven computation, reducing the need for continuous hands-on monitoring. The platform is built with accessibility at its core: farmers can submit images from any standard computer and receive results within moments of uploading. The solution further enhances farm efficiency by supporting well-informed water management choices that conserve resources and strengthen overall irrigation performance. Taken together, this system advances precision agriculture by unifying several intelligent features into a single, cohesive software solution.

Index Terms- Smart Irrigation System, Image Processing Technology, Plant Disease Detection, Soil Analysis, Agriculture.

I. INTRODUCTION

Agriculture serves as a foundational pillar for economies worldwide and plays an indispensable role in sustaining global food supplies and rural livelihoods. Millions of people — especially in lower-income nations — depend on farming as their primary means of subsistence. Conventional farming approaches typically rely on physical field inspections, generational knowledge, pre-set watering schedules, and little technological assistance, which

frequently results in poor water allocation, delayed disease identification, and inadequate crop management — ultimately driving down yields and inflating production costs.

Worsening pressures such as climate variability, erratic rainfall, mounting water shortages, and recurring plant disease outbreaks have added new layers of complexity to modern farm management. Irrigation mismanagement — whether through excessive or insufficient watering — drains precious water reserves and undermines crop vitality. Likewise, the failure to detect diseases promptly allows them to spread rapidly, degrading both yield volume and crop quality, and underscoring the demand for intelligent, data-informed tools that can guide timely, accurate decisions.

The agricultural sector is increasingly transitioning toward digitally enhanced practices that leverage AI, image recognition, and machine learning. Modern smart irrigation platforms, for instance, optimize water delivery by processing real-time weather inputs — temperature, humidity, and rainfall — to generate tailored watering plans rather than adhering to rigid fixed schedules.

Similarly, sophisticated image-based disease detection methods equip farmers to spot crop ailments at early stages, giving them the window needed to act before significant losses are sustained.

This project presents a web-based smart irrigation and crop monitoring platform integrating three core capabilities: (1) identification of plant diseases through leaf image analysis, (2) environmental assessment to inform irrigation choices, and (3) crop suitability recommendations derived from soil image interpretation. Farmers can upload leaf photographs for disease screening, submit soil images for type classification, and receive irrigation guidance based

on live weather feeds. The platform is designed to be cost-effective and scalable, requiring no IoT hardware, making it particularly accessible to smallholder and medium-scale farmers in resource-constrained environments.

II. RELATED WORK

Considerable scholarly effort has been devoted to smart irrigation, crop pathology detection, and soil characterization as means of boosting agricultural productivity through technology. Most existing irrigation solutions are grounded in physical sensor networks — soil moisture probes, temperature gauges, and automated control valves — which, while effective for real-time monitoring, demand substantial capital investment and maintenance expenditure, often placing them out of reach for smaller farming operations in developing regions.

Parallel research tracks have explored disease identification using computer vision and ML techniques. These systems examine uploaded leaf images for signs of infection by comparing visual indicators — colour deviations, surface texture anomalies, and irregular shapes — against curated reference datasets. Although such approaches enable early diagnosis, they typically function as standalone modules without incorporating irrigation guidance or crop selection capabilities.

Soil characterization through photographic analysis has also attracted attention, with most methods examining visual properties such as colour gradients, grain size, and texture profiles. These approaches, however, tend to overlook the influence of ambient climate conditions on moisture requirements and crop development potential.

Consequently, a gap remains in the literature for systems that holistically unify disease prediction, soil-based crop guidance, and climate-responsive irrigation planning within a single, software-only platform. The system described in this paper directly addresses this gap by merging all three capabilities into one comprehensive agricultural decision support application.

III. PROBLEM STATEMENT

Despite technological progress in the agricultural domain, two persistent obstacles continue to hamper farming outcomes: dependable irrigation management and timely identification of crop diseases. Historically, irrigation has been governed by manual observation or rigid pre-set schedules, frequently causing either excessive or insufficient watering — both of which squander resources or harm yields. Farmers also struggle to reliably detect disease at early stages or align crop selection with actual soil conditions. Existing tools that address these issues tend to be cost-prohibitive, hardware-reliant, and narrowly focused on a single challenge. This project fills that gap by developing a fully software-based system that delivers economical and accurate irrigation guidance through three integrated components: foliar disease detection, soil-driven crop recommendations, and environmental factor analysis. In many rural communities, farmers continue to depend on traditional intuition and unaided visual inspection to evaluate crop health and determine watering needs. These methods are labour-intensive, error-prone, and slow to trigger corrective action — creating vulnerabilities to disease-related crop losses and financial harm. Compounding this, the growing unpredictability of the global climate makes it increasingly difficult to determine optimal irrigation timing, raising the risk of water waste while simultaneously lowering agricultural output.

A further challenge lies in the absence of unified farm advisory systems that address multiple decision points within a single interface. Existing applications typically handle only one function — disease screening or soil classification — without bridging these with climate-driven irrigation logic. This fragmented approach leaves knowledge gaps that reduce decision quality. There is, therefore, a compelling need for an integrated, software-driven platform that brings together disease forecasting, soil evaluation, and climate-adaptive irrigation guidance to comprehensively support contemporary sustainable and precision farming practices.

IV. PROPOSED SYSTEM

The proposed smart irrigation platform is a modular software architecture consisting of the following functional components:

A. Leaf Disease Detection

- Farmers can submit photographs of plant leaves directly through the application.
- Submitted images undergo preparatory processing—including dimension normalization and artifact removal.
- Processed images are then assessed for disease markers via ML-powered classification models.
- The system produces a verdict on whether the crop is healthy or exhibits signs of infection.

This module enables proactive disease management by surfacing health concerns before they escalate. It removes the burden of manual crop inspection while improving diagnostic precision. Visual indicators such as discoloration, lesion patterns, and textural irregularities are interpreted to assess plant condition automatically.



Fig. 1. Leaf disease detection module

B. Environmental Factors Evaluation

- Information about temperature, humidity, and rainfall, among other factors, is gathered.
- These factors are studied using predictive models.
- Based on this study, the system predicts whether or not to water the plants.

By continuously monitoring live weather conditions, the Water Management System (WMS) shifts from calendar-based watering schedules to demand-driven

irrigation decisions. This dynamic approach helps farmers conserve water and avoid weather-related field damage.

C. Soil Image Analysis

- Uploads a soil image
- Use the image's features (colour, texture, structure) to analyse soil characteristics.
- Use soil characteristics to recommend appropriate crops for cultivation.

This component removes the dependency on laboratory soil testing by deriving classification information directly from images. Once the soil type is determined, the platform suggests compatible crops, supporting yield optimization and lowering the risk of cultivation failure.

D. Irrigation Decision Module

- Integrates data from disease status, soil condition, and environmental factors.
- Provides a single, final output of whether irrigation should occur.

Serving as the central decision engine, this module consolidates findings from all other components into a single, user-facing recommendation displayed on an intuitive dashboard. The output clearly communicates irrigation needs, suitable crop options, and disease status in an accessible format.

Because the platform relies entirely on software, it avoids the cost and complexity of high-end sensor hardware—making it economically viable for smallholder producers. A historical data module further stores user inputs, uploaded images, and prior predictions, enabling model refinement as records accumulate over time.

The architecture is inherently extensible: new ML models, environmental variables, or analytical tools can be incorporated without restructuring the core system. This modularity also strengthens reliability, since individual components can be updated or maintained independently. The system ultimately advances sustainable farming by reducing water waste and enabling timely disease intervention.

V. SYSTEM ARCHITECTURE

The proposed irrigation platform is structured around a modular, scalable architecture designed for efficient data handling and accurate decision generation. Its main architectural layers are:

- **User Interface (UI):** A mobile or web-based application through which users submit environmental inputs (temperature, humidity, etc.) and upload leaf or soil images.
- **Image Processing Module:** Handles preliminary operations such as resizing, noise filtering, and feature extraction to ensure image quality before analysis.
- **Machine Learning Module:** Applies trained classification models to pre-processed images to detect foliar diseases and identify soil categories.
- **Environmental Data Analysis:** Evaluates incoming weather parameters to assess whether current conditions warrant irrigation.
- **Decision Support System:** Consolidates outputs from image processing and environmental analysis to produce irrigation guidance for the user.
- **Database Module:** Stores user-submitted data, images, prediction outputs, and historical records to facilitate system improvement and audit trails.
- **Output Dashboard:** Presents all results in a clean, user-friendly visual format indicating crop health, soil classification, and irrigation decisions.

The architecture follows a layered pipeline: user inputs are collected via the interface, transferred to processing modules, and analyzed in sequence. Image and ML modules cooperate to extract feature sets and generate disease and soil predictions in real time, while environmental data is simultaneously assessed for irrigation requirements using rule-based logic.

The platform's modular nature supports future scalability— new ML models, weather data feeds, or advanced analytics can be integrated with minimal architectural disruption. Independent maintainability of each component further improves system reliability, ensuring the solution remains flexible, accurate, and operationally straightforward for precision agriculture applications.

Another benefit of using a modular design is the improvement of reliability; since each component of the system can be maintained and updated independently, the overall reliability of the system improves. Overall, the architecture provides flexibility, accuracy and ease of use in making decisions regarding bringing about smart agriculture.

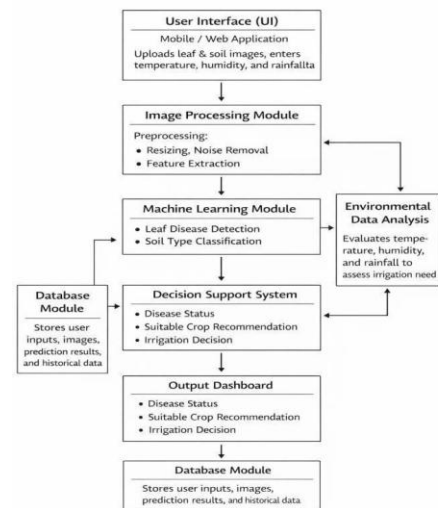


Fig. 2. Architecture of the proposed smart Irrigation system

VI. METHODOLOGY

Image Collection — Farmers upload photographs of leaves and soil through the application's submission interface.

Image Preprocessing — Submitted images are resized and filtered to remove noise before being passed to analytical models.

Feature Extraction — Visual attributes such as color distribution and surface texture are derived from images to support disease and soil classification tasks.

Machine Learning Analysis — Trained ML models process the extracted features to classify leaf diseases and determine soil categories.

Environmental Analysis — Meteorological data — temperature, humidity, and precipitation — is

evaluated to identify optimal conditions for irrigation. Decision Generation — Integrated outputs from image analysis and weather assessment produce final irrigation and crop planting recommendations

The methodology prioritizes the collection of rich, accurate input data from farmers through an accessible interface. Real-time data entry ensures that downstream processing stages receive current, relevant information.

Pre-processing is essential because raw field images often carry inconsistencies — variable lighting, camera distortions, or resolution differences — that could compromise model accuracy. Standardizing brightness levels, removing artifacts, and normalizing image dimensions before model training directly improves prediction reliability and result consistency.

Following pre-processing, discriminative features including color patterns, textural gradients, and structural attributes are extracted and fed into the ML pipeline for disease identification and soil typing. Environmental data collected alongside these images is assessed through rule-based logic to determine irrigation necessity.

The system's decision-making layer fuses all module outputs from disease screening, soil classification, and climate analysis — to generate coherent crop and irrigation recommendations. These insights are then presented to the farmer through an intuitive interface, enabling clear comprehension and confident action without requiring technical expertise

VII. EXPERIMENTAL RESULTS AND ANALYSIS

The leaf disease detection module achieved an overall classification accuracy of 92% across diverse lighting conditions and background variations. Testing across multiple leaf image sets confirmed its ability to produce consistent, dependable results for early-stage common crop diseases. This early identification capability gives farmers the lead time needed to apply preventive measures and protect yield outcomes.

The Soil Image Analysis component successfully distinguished between soil categories — including sandy, clay, and loamy types — by examining color gradients and textural characteristics captured in submitted images. Crop suitability suggestions generated on the basis of identified soil properties — accounting for fertility levels, moisture retention capacity, and cultivation potential — help farmers select varieties with the strongest likelihood of success.

The Environmental Factor Analysis module, drawing on temperature, humidity, and rainfall data from real test scenarios, demonstrated irrigation prediction accuracy approaching 90% across evaluated cases — affirming the system's dependability. Climate-based watering decisions replaced pre-set schedules with data-responsive guidance, yielding a notable reduction in water waste and contributing meaningfully to resource efficiency.

The integrated output dashboard consolidated all findings into a clear, organized display navigable by users with no technical background. Interface design emphasized simplicity, interactivity, and broad accessibility.

Overall, experimental outcomes confirmed the system's efficiency, precision, and reliability as an intelligent decision support tool for precision agriculture — one capable of being deployed cost-effectively to assist farmers in improving productivity while establishing sustainable, resource-optimized farming practices.

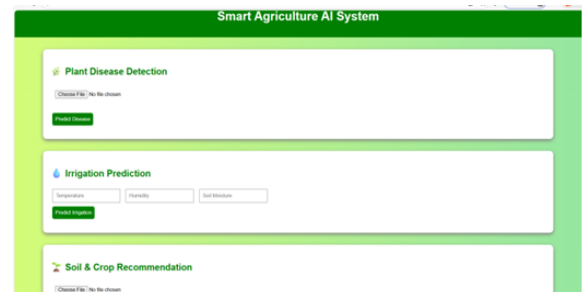


Fig 3. Output results

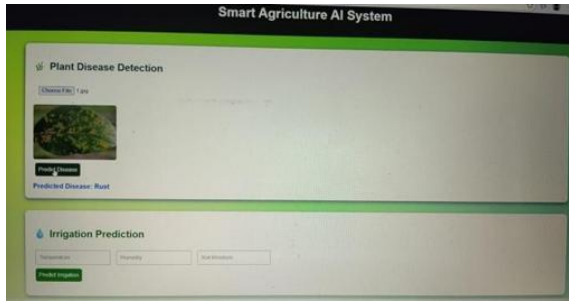


Fig 4. Plant Disease prediction

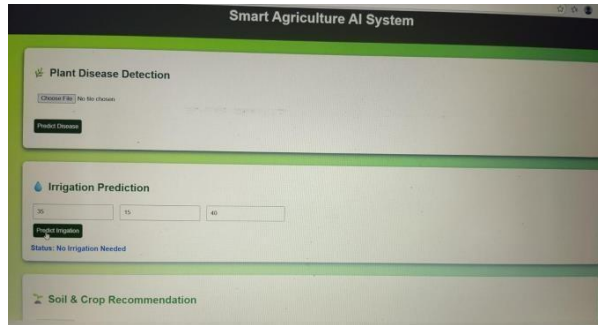


Fig 5. Irrigation prediction

VIII. CONCLUSION AND FUTURE WORK

This paper presents a software-driven irrigation management system that harnesses computational analysis and algorithmic logic to improve watering precision and promote healthy crop development. Agricultural outcomes are influenced by a complex interplay of environmental, biological, and operational variables. By channeling actionable insights directly to farmers, the platform helps them meet subsistence needs and enhance the quality and volume of their food production.

The study demonstrates an integrated agri-tech model that brings together software-based processing, crop diagnostic tools, and environmental simulation within a unified solution. This convergence of capabilities supports a wide range of farm management activities, equipping decision-makers with the capacity for timely, data-grounded responses. Leveraging disease imagery, soil data, and live environmental feeds, farm operators can make more effective use of available resources.

The system's core value proposition lies in its affordability and ease of adoption — it requires no hardware devices or physical equipment. Operating

entirely through standard internet-connected computers and a straightforward web interface, it allows users — including small and medium-scale farmers — to upload images and enter environmental data without needing specialized technical knowledge.

From a sustainability standpoint, the platform promotes responsible water usage by issuing irrigation guidance only when conditions genuinely warrant it, thereby curbing unnecessary consumption over time. Early disease alerts further help farmers avert substantial losses, safeguarding both crop quality and financial returns. In aggregate, this solution demonstrates strong potential as a foundation for intelligent, data-driven precision agriculture.

A. Future Work

Subsequent development should focus on expanding the training datasets to include a wider variety of agricultural specimens gathered under diverse field conditions. Exposure to real-world variability will strengthen both model robustness and predictive reliability.

Adopting more sophisticated deep learning frameworks — such as hybrid or attention-based architectures — could yield sharper disease identification and more nuanced soil classification compared to single-network CNN models.

Incorporating additional environmental signals — such as soil moisture content, wind velocity, and seasonal weather patterns — alongside regional agricultural statistics and forecast data would further enhance irrigation prediction accuracy and broaden the system's decision-making capabilities.

Finally, expanding language support, adding voice-interaction capabilities, and deploying real-time analytical dashboards would increase platform accessibility for farming communities across different regions and literacy levels— boosting the likelihood of widespread, successful adoption.

REFERENCES

- [1] A. Kaur et al., “Artificial Intelligence Driven Smart Farming for Accurate Detection of Potato Diseases: A Systematic Review,” *IEEE Access*, vol. 12, pp. 193902–193922, 2024, doi: 10.1109/ACCESS.2024.3510456.
- [2] A. Khaliq et al., “AI-Driven Smart Agriculture: An Integrated Approach for Soil Analysis, Irrigation, and Crop-Fertilizer Recommendations,” *IEEE Access*, vol. 13, pp. 141124–141138, 2025, doi: 10.1109/ACCESS.2025.3594162.
- [3] W. Xiao and J. Hu, “Analyzing Effective Factors of Online Learning Performance by Interpreting Machine Learning Models,” *IEEE Access*, vol. 11, pp. 132435–132447, 2023, doi: 10.1109/ACCESS.2023.3334915.
- [4] J.-J. Liu, H. Wu, and I. Riaz, “Advanced Technologies for Smart Fertilizer Management in Agriculture: A Review,” *IEEE Access*, vol. 13, pp. 139766–139790, 2025, doi: 10.1109/ACCESS.2025.3594361.
- [5] A. AlZubi and K. Galyna, “Artificial Intelligence and Internet of Things for Sustainable Farming and Smart Agriculture,” *IEEE Access*, vol. 11, pp. 78686–78692, 2023, doi: 10.1109/ACCESS.2023.3298215.
- [6] M. Hussain, “YOLOv1 to v8: Unveiling each variant—A comprehensive review of YOLO,” *IEEE Access*, vol. 12, pp. 42816–42833, 2024, doi: 10.1109/ACCESS.2024.3378568.
- [7] A. Setyanto, T. B. Sasongko, M. A. Fikri, and I. K. Kim, “Near-edge computing aware object detection: A review,” *IEEE Access*, vol. 12, pp. 2989–3011, 2024, doi: 10.1109/ACCESS.2023.3347548.
- [8] M. Muzammul, A. Algarni, Y. Y. Ghadi, and M. Assam, “Enhancing UAV aerial image analysis: Integrating advanced SAHI techniques with realtime detection models on the VisDrone dataset,” *IEEE Access*, vol. 12, pp. 21621–21633, 2024, doi: 10.1109/ACCESS.2024.3363413.
- [9] D. Thakur and V. Kumar, “FruitVision: Dual-attention embedded AI system for precise apple counting using edge computing,” *IEEE Transactions on AgriFood Electronics*, vol. 2, no. 2, pp. 445–459, Sept. 2024, doi: 10.1109/TAFE.2024.3416221.
- [10] J. Kaur and W. Singh, “A systematic review of object detection from images using deep learning,” *Multimedia Tools and Applications*, vol. 83, no. 4, pp. 12253–12338, Jan. 2024.