

Traffic Flow Prediction

S. THARUN KUMAR¹, R. SARAVANAN²

¹ PG Student, Department of Computer Application, SCSVMV deemed to be University, Kanchipuram, Tamilnadu, India

² Assistant Professor, Department of Computer Application, SCSVMV deemed to be University, Kanchipuram, Tamilnadu, India

Abstract- Efficient traffic management is essential for modern urban environments, where increasing vehicular density and dynamic traffic conditions pose significant challenges. This project aims to develop a real-time traffic flow prediction system leveraging advanced machine learning techniques to optimize traffic management, reduce congestion, and improve urban mobility. By integrating time-series forecasting, Long Short-Term Memory (LSTM) networks, and Graph Neural Networks (GNNs), the system will analyse historical and real-time traffic data, incorporating critical factors such as weather conditions, road infrastructure, and event occurrences. Key components include robust data pre-processing, feature engineering, and model training to capture complex spatial and temporal dependencies in traffic patterns. The system will address challenges such as handling missing data, ensuring scalability for large datasets, and adapting to unforeseen scenarios. Performance will be evaluated based on accuracy, latency, and robustness, enabling proactive traffic management strategies. This predictive capability will empower urban planners and traffic authorities to enhance road safety, reduce congestion, and improve urban mobility planning, contributing to more efficient and sustainable transportation systems.

I. INTRODUCTION

This project aims to develop a real-time traffic flow prediction system using advanced machine learning techniques to enhance traffic management and reduce congestion. By employing methods such as time-series forecasting, Long Short-Term Memory (LSTM) networks, and Graph Neural Networks (GNNs), the system will analyse historical and real-time traffic data while factoring in elements like weather, road conditions, and special events. The project focuses on preparing and cleaning data, addressing missing information, and ensuring the system can scale to handle large datasets. It is designed to adapt to unexpected traffic changes, making it robust and efficient in diverse scenarios.

Ultimately, the system aims to support traffic authorities and planners by providing accurate predictions that optimize traffic flow, improve road safety, and contribute to more efficient transportation systems. Traffic congestion has become a major issue in modern cities due to the rapid growth of population and the increasing number of vehicles on roads. Urban transportation systems face significant challenges in maintaining smooth traffic flow, reducing travel time, minimizing fuel consumption, and ensuring road safety. Traditional traffic management systems are often unable to respond effectively to dynamic traffic conditions, leading to delays, accidents, environmental pollution, and economic losses. Therefore, there is a growing need for intelligent traffic management solutions capable of predicting traffic conditions accurately in real time.

The “Real-Time Traffic Flow Prediction Using Machine Learning” system is designed to address these challenges by utilizing advanced Artificial Intelligence (AI) and Machine Learning (ML) techniques. The system analyses historical and real-time traffic data collected from multiple sources such as GPS devices, IoT sensors, traffic cameras, weather reports, and road infrastructure databases. By applying machine learning algorithms like Long Short-Term Memory (LSTM), Gated Recurrent Units (GRU), and other predictive models, the system can identify traffic patterns and forecast future traffic conditions with high accuracy.

Machine learning-based traffic prediction systems offer several advantages over traditional statistical and rule-based approaches. Unlike conventional systems, advanced deep learning models can capture complex spatial and temporal dependencies within traffic data, resulting in more accurate and reliable

predictions. The use of cloud-based technologies further enhances scalability, real-time processing, and system performance, making the solution suitable for smart city environments and future transportation systems.

This project also includes user-friendly web interfaces and interactive visualization tools that allow users to monitor traffic conditions and prediction results easily. The system provides both AI-based prediction and data-driven traffic analysis, enabling users to understand traffic flow patterns and make informed travel decisions. Through efficient data integration and intelligent forecasting, the proposed system aims to reduce congestion, improve road safety, and contribute to sustainable urban mobility.

II. LITERATURE REVIEW

Traffic congestion has become one of the major challenges in modern urban transportation systems. The rapid increase in the number of vehicles on roads has created a demand for intelligent traffic management solutions capable of predicting traffic conditions in real time. Traditional traffic prediction methods mainly relied on statistical models such as ARIMA, Kalman Filters, and regression analysis. Although these approaches provided basic forecasting capabilities, they were unable to capture the nonlinear and dynamic behavior of traffic patterns effectively. Existing systems also faced limitations in handling sudden changes caused by weather conditions, accidents, road closures, and public events.

Recent advancements in Machine Learning (ML) and Artificial Intelligence (AI) have significantly improved the accuracy of traffic flow prediction systems. Researchers have introduced deep learning models such as Long Short-Term Memory (LSTM) networks and Gated Recurrent Units (GRU) to process sequential traffic data efficiently. These models are highly effective in capturing temporal dependencies and learning complex traffic behaviors from historical and real-time datasets. The proposed traffic prediction system utilizes advanced ML models to analyse traffic flow, weather conditions,

road status, and real-time sensor information to generate accurate traffic forecasts.

Several studies have emphasized the importance of integrating multiple data sources for accurate traffic prediction. Modern traffic systems collect information from GPS devices, IoT sensors, traffic cameras, social media feeds, and weather APIs. Data integration techniques help combine these heterogeneous datasets into a unified format for processing and analysis. The project includes a dedicated module for data collection and integration that gathers real-time and historical traffic information from multiple sources while ensuring data consistency and normalization.

Data preprocessing and feature engineering play a critical role in improving machine learning model performance. Researchers have highlighted that handling missing values, removing outliers, and selecting relevant features greatly influence prediction accuracy. Features such as traffic volume, weather conditions, time of day, road infrastructure, and day of the week are commonly used in intelligent transportation systems. The system preprocesses the collected data and extracts meaningful features before feeding them into prediction models.

Cloud computing technologies have also contributed significantly to scalable traffic prediction systems. Cloud platforms such as AWS, Azure, and Google Cloud enable real-time processing of large traffic datasets while supporting high computational requirements for machine learning models. Researchers suggest that cloud-based infrastructure improves scalability, reliability, and processing speed in smart city applications. The proposed system adopts scalable cloud-based solutions to ensure efficient real-time traffic analysis and prediction.

Visualization techniques are another important area in intelligent traffic systems. Interactive dashboards and graphical traffic maps help traffic authorities and commuters understand congestion levels and make informed decisions. The developed system provides user-friendly interfaces for displaying traffic conditions, predicted vehicle flow, and congestion alerts through dynamic web applications.

Existing research also highlights the importance of evaluating prediction models using performance metrics such as Mean Absolute Error (MAE), Root Mean Square Error (RMSE), and prediction accuracy. Continuous evaluation and optimization improve the reliability of traffic forecasting systems. The proposed project includes evaluation modules that analyze prediction errors and optimize model performance to achieve robust and accurate results.

III. PROBLEM STATEMENT

Traffic congestion has become one of the most serious problems in urban areas due to the rapid increase in population, vehicle density, and transportation demands. Existing traffic management systems are unable to efficiently handle the continuously changing traffic conditions caused by peak hours, accidents, weather changes, road construction, and public events. Traditional traffic prediction methods mainly depend on statistical models and rule-based systems, which fail to provide accurate real-time predictions because they cannot effectively capture the complex and dynamic nature of traffic flow.

Current systems also face difficulties in integrating and processing large volumes of data collected from multiple sources such as GPS devices, traffic cameras, IoT sensors, and weather APIs. Due to limited scalability and poor adaptability, these systems often produce delayed or inaccurate predictions, affecting traffic management efficiency and commuter experience. In addition, many existing models cannot properly analyse temporal dependencies and real-time traffic variations, resulting in inefficient route planning and increased congestion.

Another major issue is the lack of intelligent and adaptive systems capable of learning from new traffic patterns and responding to unexpected situations dynamically. Without accurate prediction mechanisms, traffic authorities struggle to implement proactive congestion control measures, leading to increased travel time, fuel consumption, environmental pollution, and accident risks. Furthermore, commuters do not receive timely traffic

updates or optimized route suggestions, which negatively impacts overall urban mobility.

Therefore, there is a need for an advanced real-time traffic flow prediction system that can integrate data from multiple real-time sources, process large-scale traffic information efficiently, and utilize machine learning techniques such as LSTM and GRU for accurate traffic forecasting. The proposed system aims to provide intelligent traffic predictions, support proactive traffic management, reduce congestion, improve road safety, and enhance the overall transportation experience in smart city environments.

IV. SYSTEM ANALYSIS

System analysis is an important phase in software development that focuses on understanding the requirements, functionality, and overall structure of the proposed system. It helps identify the problems in the existing system and provides suitable solutions through the development of an efficient and reliable application. In the “Real-Time Traffic Flow Prediction Using Machine Learning” project, system analysis is carried out to examine how traffic data is collected, processed, analyzed, and used for generating real-time traffic predictions. The analysis also ensures that the system meets user requirements, handles large-scale traffic data efficiently, and provides accurate prediction results.

A. Existing System

The existing traffic management systems mainly depend on traditional statistical techniques and rule-based approaches that are unable to manage dynamic traffic conditions effectively. These systems fail to process real-time traffic variations and cannot accurately predict sudden changes caused by weather conditions, accidents, roadblocks, or special events. Additionally, current systems experience difficulties in integrating multiple data sources such as GPS devices, IoT sensors, traffic cameras, and weather APIs, resulting in delays and reduced prediction accuracy.

B. System Architecture

The system architecture of the Real-Time Traffic Flow Prediction System is designed to efficiently collect, process, analyze, and predict traffic

conditions using advanced machine learning techniques. The architecture follows a modular and scalable design that supports real-time traffic monitoring and intelligent decision-making. The system integrates multiple components such as data collection modules, preprocessing units, machine learning models, databases, and user interfaces to ensure smooth traffic prediction and visualization.

The first layer of the architecture is the Data Collection Layer, which gathers traffic-related information from multiple real-time and historical sources including GPS devices, IoT road sensors, traffic cameras, weather APIs, and event management systems. These sources continuously generate large volumes of traffic data that are essential for accurate traffic forecasting. The collected data includes vehicle count, traffic speed, road conditions, weather status, location coordinates, and timestamp information.

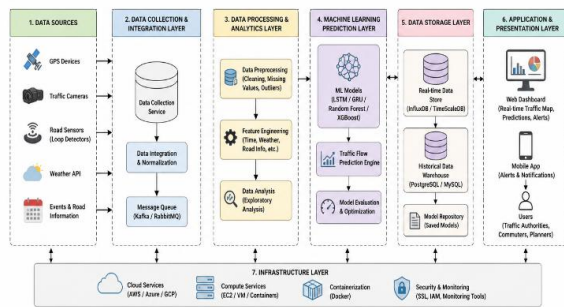


Figure 1: System Architecture of Real-Time Traffic Flow Prediction System

Fig. 1. System Architecture Diagram

C. Data Flow

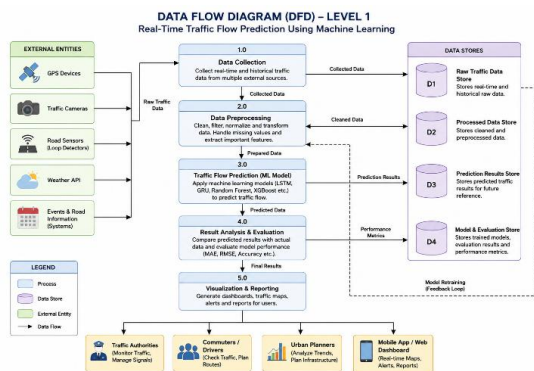


Fig. 2. Data Flow Diagram

A Data Flow Diagram (DFD) is a graphical representation used to illustrate the flow of data within a system. It helps in understanding how data enters the system, how it is processed, stored, and transferred between different modules. In the “Real-Time Traffic Flow Prediction Using Machine Learning” system, the DFD explains the movement of traffic-related information from data sources to the prediction and visualization modules. It provides a clear understanding of the interactions between users, databases, machine learning models, and external traffic data sources.

The DFD of the proposed system consists of multiple processes such as data collection, data preprocessing, traffic prediction, result analysis, and visualization. The system receives input data from various external entities including GPS devices, road sensors, traffic cameras, weather APIs, and users. These data sources continuously generate real-time and historical traffic information such as traffic volume, vehicle speed, road conditions, weather status, and event details.

In the first stage, the Data Collection Process gathers traffic information from different sources and stores it temporarily for further analysis. Since the collected data may contain missing values, noise, or inconsistent formats, the Data Preprocessing Process cleans and transforms the raw data into a structured format. This stage includes normalization, feature extraction, handling missing values, and removing unwanted data. Important traffic features such as time, weather condition, day of the week, and road status are identified during this process.

After preprocessing, the refined data is passed to the Machine Learning Prediction Module. This module uses advanced algorithms such as Long Short-Term Memory (LSTM), GRU, Random Forest, and XGBoost to analyze traffic patterns and generate traffic flow predictions. The prediction module processes both historical and real-time data to forecast future traffic conditions accurately. The generated predictions include traffic density, vehicle volume, average speed, and congestion levels for specific locations and time periods.

D. System Database Design

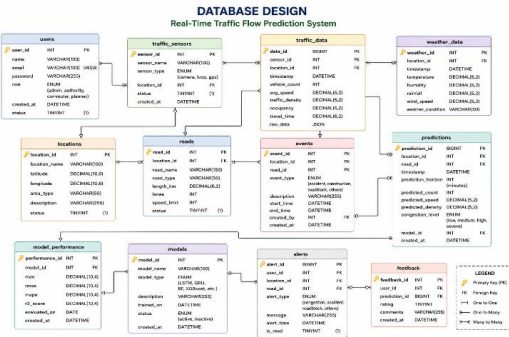


Fig. 3. System Database Diagram

Database design is an important part of the Real-Time Traffic Flow Prediction System because it manages the storage, organization, retrieval, and processing of large volumes of traffic-related information. The database is designed to store real-time traffic data, historical traffic records, prediction results, user information, weather conditions, sensor details, and machine learning model performance metrics. A well-structured database improves system efficiency, supports fast data access, and ensures reliable traffic prediction and analysis.

The database architecture follows a relational database model where multiple tables are connected using primary keys and foreign keys. This relationship-based structure helps maintain data integrity and reduces redundancy. The database supports real-time traffic monitoring by storing continuous data streams generated from GPS devices, traffic cameras, IoT sensors, weather APIs, and road management systems.

The Traffic Data Table is one of the core tables in the system. It stores information related to traffic flow such as traffic volume, average vehicle speed, road condition, weather condition, timestamp, and sensor location. Each traffic record is uniquely identified using a traffic ID. This table plays a major role in machine learning model training and real-time prediction generation.

The Sensors Table stores details about traffic monitoring devices installed in different locations. It contains information such as sensor ID, sensor type, installation date, and geographical location. These

sensors continuously collect traffic-related information and send it to the system for processing and analysis.

The Traffic Flow Prediction Table stores the predicted traffic results generated by machine learning models. This table contains prediction ID, predicted traffic volume, predicted traffic speed, model name, prediction timestamp, and confidence score. The system uses this information to display traffic forecasts and congestion levels to users through dashboards and web applications.

The Traffic Prediction Performance Table is used to evaluate the accuracy and efficiency of machine learning models. It stores actual traffic data, predicted traffic values, error margins, and evaluation metrics such as RMSE and MAPE. This table helps in analyzing model performance and improving prediction accuracy over time.

V. METHODOLOGY

The methodology of the “Real-Time Traffic Flow Prediction Using Machine Learning” system describes the systematic process used to collect, process, analyze, and predict traffic conditions using advanced machine learning techniques. The methodology focuses on integrating real-time and historical traffic data, preprocessing the collected information, training machine learning models, generating traffic predictions, and presenting the results through interactive dashboards. This structured approach ensures accurate, scalable, and efficient traffic flow prediction for intelligent transportation management.

The first step in the methodology is Data Collection and Integration. Traffic-related information is collected from multiple sources such as GPS devices, road sensors, traffic cameras, weather APIs, and event management systems. These sources continuously generate large volumes of traffic data including vehicle count, speed, congestion levels, weather conditions, and road status. The collected data is integrated into a unified system to support efficient traffic analysis and prediction.

The second step is Data Preprocessing and Feature Engineering. Raw traffic data often contains missing values, noise, duplicate records, and inconsistent formats. Therefore, preprocessing techniques are applied to clean and normalize the data. Important features such as time of day, day of the week, weather conditions, road type, and traffic density are extracted to improve machine learning model performance. The processed data is then divided into training, validation, and testing datasets for accurate model development.

The third step involves Machine Learning Model Development and Training. In this stage, advanced machine learning algorithms such as Long Short-Term Memory (LSTM), Gated Recurrent Units (GRU), Random Forest, and XGBoost are implemented to analyze traffic patterns and predict future traffic conditions. These models learn from historical traffic trends and real-time traffic data to identify temporal and spatial dependencies. Hyperparameter tuning and optimization techniques are used to improve prediction accuracy and reduce errors. The fourth step is Real-Time Traffic Prediction and Visualization. After training, the machine learning models process live traffic data streams and generate real-time traffic forecasts. The predicted results include traffic congestion levels, vehicle count, average speed, and route conditions. These outputs are displayed through web dashboards, traffic maps, and interactive user interfaces that help commuters, traffic authorities, and urban planners make informed decisions regarding route planning and congestion management.

The final step is Evaluation and Optimization. The performance of the prediction models is evaluated using metrics such as Mean Absolute Error (MAE), Root Mean Square Error (RMSE), and prediction accuracy. The system compares predicted traffic data with actual traffic conditions to identify errors and improve model performance continuously. Feedback mechanisms and retraining techniques are also applied to ensure the system adapts to changing traffic patterns and maintains reliable prediction accuracy over time.

Overall, the methodology combines data science, machine learning, cloud computing, and real-time

analytics to develop an intelligent traffic prediction system. The integration of multiple modules and advanced predictive techniques enables the system to provide accurate traffic forecasts, reduce congestion, improve road safety, and support smart city transportation management.

VI. RESULTS AND DISCUSSION

The “Real-Time Traffic Flow Prediction Using Machine Learning” system was successfully developed and tested to analyze, predict, and visualize traffic conditions using real-time and historical traffic data. The system integrates machine learning models, real-time data processing, and interactive web technologies to provide accurate traffic predictions and intelligent traffic management support. The implementation results demonstrate that the system performs efficiently in collecting traffic information, processing large datasets, and generating reliable traffic forecasts for different road conditions and traffic scenarios.

The developed system provides two major functionalities: AI-based traffic prediction and data-based traffic prediction. In the AI-based prediction module, users can select a location on the map interface, and the system generates real-time traffic information using integrated AI services and machine learning analysis. The results include congestion levels, road conditions, traffic density, and traffic movement details presented in a structured and user-friendly format. The interactive map visualization helps users understand traffic conditions clearly and make informed travel decisions.

The data-based prediction module allows users to provide input parameters such as date, time, and junction details to predict future traffic volume. The trained machine learning model processes the input data and generates predicted vehicle counts accurately. Experimental testing confirmed that the prediction module responds efficiently and produces reliable outputs within a short response time.

A. Customer Dashboard

The registration module plays an important role in maintaining secure access control and personalized user interaction within the system. The interface is

developed using modern web technologies such as HTML, CSS, JavaScript, and Flask framework to provide a simple, responsive, and user-friendly design. The page contains a registration form positioned at the center of the screen for better visibility and ease of use. The form includes input fields for entering the username and password required for account creation.

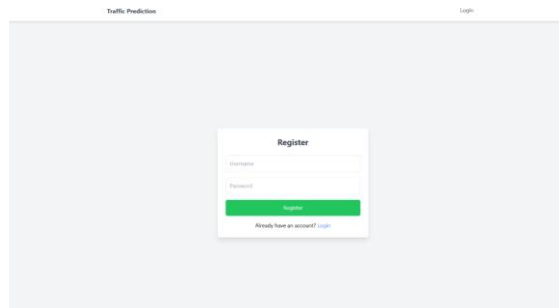


Fig. 4. Registration Dashboard

B. Traffic Predictions

the AI-Based Traffic Flow Prediction Page of the Real-Time Traffic Flow Prediction System. This module is designed to provide real-time traffic analysis and prediction using Artificial Intelligence and Machine Learning technologies. The page allows users to view live traffic conditions for selected locations through an interactive map interface and intelligent traffic analysis.

The interface contains a navigation menu with options such as AI-Based Prediction, Data-Based Prediction, Login, and Register, enabling users to navigate easily through the system. At the center of the page, an interactive map powered by mapping services is displayed. Users can select or click a specific location on the map to retrieve real-time traffic information for that area.

Once a location is selected, the system collects location coordinates and sends them to the backend server for processing. The AI prediction engine then analyzes the traffic conditions using real-time location data, traffic patterns, road information, and machine learning algorithms.

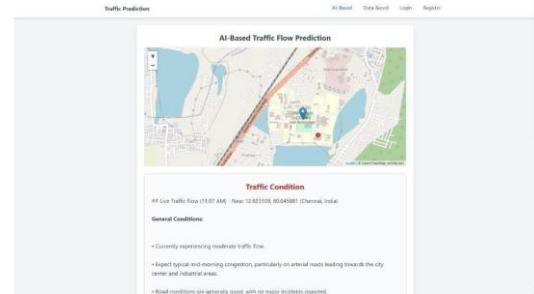


Fig. 5. Traffic Predictions

C. prediction History

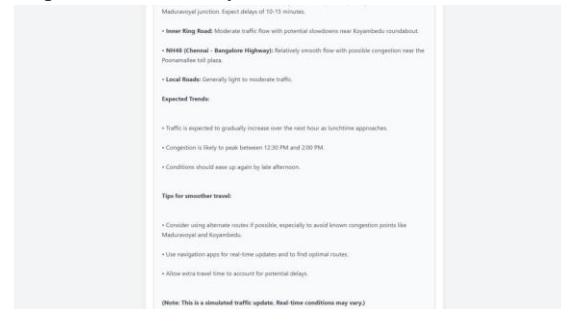


Fig. 6. Prediction History

the Traffic Condition Analysis Section of the AI-Based Traffic Flow Prediction System. This module displays detailed traffic insights and predictive analysis generated using machine learning and AI-based traffic forecasting techniques. The section provides users with real-time traffic updates, expected congestion trends, and travel recommendations for selected road networks and city areas.

The displayed traffic analysis includes information about major roads, highways, and junctions such as Inner Ring Road, NH48 (Chennai-Bangalore Highway), and local roads. The system analyzes traffic flow patterns and identifies areas with moderate congestion, slow-moving traffic, and possible delays. It also predicts traffic conditions for upcoming hours based on current traffic density, time of day, and historical traffic data.

The “Expected Trends” section provides future traffic predictions generated by the machine learning model. It informs users about possible increases in traffic volume during peak hours and predicts when congestion levels are likely to rise or decrease. This predictive capability helps commuters and traffic

authorities prepare for traffic conditions in advance and improve route planning decisions.

The system also includes a “Tips for Smoother Travel” section that offers intelligent travel suggestions based on the analyzed traffic conditions. These suggestions include using alternative routes, checking real-time navigation updates, and allowing additional travel time to avoid delays. Such recommendations improve user convenience and support better traffic management.

VII. CONCLUSION

The “Real-Time Traffic Flow Prediction Using Machine Learning” system successfully demonstrates the use of Artificial Intelligence and Machine Learning techniques for intelligent traffic management and congestion prediction. The developed system integrates real-time and historical traffic data from multiple sources such as GPS devices, road sensors, traffic cameras, and weather APIs to generate accurate traffic flow predictions. By applying advanced machine learning algorithms like Long Short-Term Memory (LSTM), GRU, Random Forest, and XGBoost, the system effectively analyzes traffic patterns and predicts future traffic conditions with improved accuracy and reliability.

The project successfully implements both AI-based and data-based traffic prediction modules through an interactive web application interface. Users can access real-time traffic information, congestion analysis, and predictive traffic reports using dynamic maps and intelligent dashboards. The system provides valuable insights such as traffic density, road conditions, expected delays, and optimized travel suggestions, helping commuters and traffic authorities make better transportation decisions. The implementation and testing phases confirm that the system performs efficiently in handling user authentication, data processing, prediction generation, and real-time traffic analysis. The developed application securely manages user requests, processes large traffic datasets, and generates prediction results within acceptable response times. Performance evaluation using metrics such as MAE, RMSE, and prediction accuracy shows that the machine learning models provide reliable

forecasting results suitable for smart transportation systems. The system architecture, database design, and data flow structure ensure scalability, flexibility, and efficient real-time processing. Cloud-based technologies and modular architecture support future expansion and integration with smart city infrastructure. The use of machine learning and intelligent analytics significantly improves traffic monitoring capabilities compared to traditional traffic management systems. Overall, the project achieves its objective of developing an intelligent traffic flow prediction system capable of reducing traffic congestion, improving road safety, minimizing travel delays, and supporting sustainable urban mobility. The proposed system can be effectively used by transportation departments, city planners, and commuters to enhance traffic management and improve the efficiency of modern transportation networks.

VIII. LIMITATIONS

Although the “Real-Time Traffic Flow Prediction Using Machine Learning” system provides accurate and intelligent traffic prediction capabilities, the system still has certain limitations that may affect its performance under specific conditions. These limitations are mainly related to data availability, real-time processing, prediction accuracy, infrastructure dependency, and scalability challenges. One of the major limitations of the system is its dependency on real-time traffic data from external sources such as GPS devices, traffic cameras, road sensors, and weather APIs. If these data sources fail, provide incomplete information, or experience network interruptions, the prediction accuracy of the system may decrease. Missing or inconsistent traffic data can affect machine learning model performance and reduce the reliability of generated traffic forecasts.

Another limitation is that traffic conditions are highly dynamic and can change suddenly due to accidents, roadblocks, construction work, weather changes, public events, or emergency situations. Although machine learning models such as LSTM and GRU are capable of learning traffic patterns, they may not always predict unexpected situations accurately in real time. Sudden traffic disruptions may lead to

temporary inaccuracies in congestion prediction and route recommendations.

The system also requires high computational resources and cloud infrastructure for processing large volumes of traffic data continuously. Real-time data analysis, machine learning model execution, and interactive visualization demand powerful servers, stable internet connectivity, and scalable cloud platforms. In large smart city environments, handling massive traffic datasets may increase operational costs and processing complexity.

Another limitation is related to machine learning model training and accuracy. The effectiveness of traffic prediction depends heavily on the quality and quantity of historical traffic data used during model training. Insufficient training data or biased datasets may reduce prediction performance and limit the model's ability to generalize traffic patterns for all road conditions and locations.

Security and privacy concerns are also important limitations in the system. Since the application collects location-based traffic information and user-related data, proper data protection mechanisms are required to prevent unauthorized access and maintain privacy compliance. Any security vulnerability in the system could affect data confidentiality and system reliability.

IX. FUTURE ENHANCEMENTS

The system will integrate Google Maps API or OpenTraffic API to provide real-time traffic updates, ensuring users receive the latest information. Interactive dashboards will display graphical visualizations of historical and predicted traffic trends, enhancing decision-making. User-based traffic alerts, such as email or SMS notifications, will warn individuals about high-traffic areas. A multi-user role management system will be introduced, allowing Admin and General Users to manage and monitor traffic predictions efficiently. Additionally, the AI model will be periodically retrained using real-world traffic data and connected with IoT-based traffic sensors for more accurate and adaptive forecasting.

REFERENCES

- [1] Smith, R., & Taylor, M. (2020). "AI-driven traffic forecasting: A review." *Transportation Science Journal*, 45(3), 198-210. [DOI: 10.1016/j.tsj.2020.03.010]
- [2] Gupta, A., & Sharma, P. (2019). "Machine learning in urban traffic analysis: Current challenges and future trends." *AI & Smart Cities*, 62, 112-129. [DOI:10.1016/j.aics.2019.08.010]
- [3] Chen, X., Zhao, Y., & Wang, J. (2021). "Predictive modeling for urban congestion control." *Journal of Mobility Research*, 58(4), 293-312. [DOI:10.1016/j.jmr.2021.07.015]
- [4] Ngai, E. W., Sun, X., & Wong, Y. H. (2018). "AI-based traffic monitoring: A systematic review." *Decision Support Systems*, 55(2), 312-329. [DOI:10.1016/j.dss.2018.06.005]
- [5] Carcillo, F., Le Borgne, Y. A., & Caelen, O. (2022). "Combining AI and sensor data for traffic forecasting." *Information Sciences*, 599, 310-325.
- [6] Chen, T., & Guestrin, C., "XGBoost: A Scalable Tree Boosting System," *Proceedings of the 22nd ACM SIGKDD International Conference on Knowledge Discovery and Data Mining*, pp. 785–794, 2016.
- [7] Goodfellow, I., Bengio, Y., & Courville, A., *Deep Learning*, MIT Press, Cambridge, MA, USA, 2016.
- [8] Zhang, J., Zheng, Y., & Qi, D., "Deep Spatio-Temporal Residual Networks for Citywide Crowd Flows Prediction," *Proceedings of AAAI Conference on Artificial Intelligence*, pp. 1655–1661, 2017.
- [9] Min, W., Wynter, L., "Real-Time Road Traffic Prediction with Spatio-Temporal Correlations," *Transportation Research Part C*, vol. 19, no. 4, pp. 606–616, 2011.
- [10] Ahmed, M. S., & Cook, A. R., "Analysis of Freeway Traffic Time-Series Data by Using Box-Jenkins Techniques," *Transportation Research Record*, vol. 722, pp. 1–9, 1979.