

Machine Learning-Based Predictive Healthcare System for Early Heart Disease Detection

SATYAM KASHYAP¹, SHALINI SHROTRIYA²

¹*Dept. Of Information Technology, Noida Institute of Engineering and Technology (NIET), Greater Noida, India*

²*Assistant Professor, Dept. Of Information Technology, Noida Institute of Engineering and Technology (NIET), Greater Noida, India*

Abstract- Heart disease is one of the leading causes of death across the world, making early diagnosis and prediction extremely important in modern healthcare systems. Traditional medical diagnosis methods often require continuous monitoring, laboratory testing, and expert analysis, which may consume considerable time and resources. With the rapid growth of Artificial Intelligence and Machine Learning technologies, intelligent healthcare systems are becoming more effective in supporting medical professionals during disease prediction and diagnosis. This research presents a Machine Learning-based Predictive Healthcare System for early heart disease detection using patient healthcare data. The proposed system uses different machine learning algorithms including Logistic Regression, Decision Tree, Random Forest, and Support Vector Machine to analyze medical parameters such as age, blood pressure, cholesterol level, heart rate, fasting blood sugar, and chest pain type. The primary objective of the system is to improve prediction accuracy and assist healthcare professionals in making faster and more reliable decisions. The proposed methodology includes data preprocessing, feature selection, model training, testing, and performance evaluation using the UCI Heart Disease Dataset. Experimental analysis demonstrates that Machine Learning techniques can significantly improve healthcare prediction systems. Among all implemented algorithms, Random Forest achieved the highest prediction accuracy. The proposed system can help reduce human error, support early diagnosis, and contribute toward intelligent healthcare solutions.

KEYWORDS: *Machine Learning, Healthcare, Heart Disease Prediction, Artificial Intelligence, Predictive Analytics, Random Forest, Medical Diagnosis*

I. INTRODUCTION

Healthcare is one of the most important sectors where modern technology can create a major impact on human life. In recent years, the number of heart

disease cases has increased rapidly due to unhealthy lifestyles, stress, poor eating habits, and lack of physical activity. According to global health reports, cardiovascular diseases are among the leading causes of death worldwide. Early prediction and timely diagnosis are essential to reduce mortality rates and improve patient treatment.

Traditional healthcare systems mainly depend on medical experts, laboratory testing, and continuous patient monitoring. Although these methods are effective, they often require significant time and resources. In some situations, delayed diagnosis can lead to serious health complications. As healthcare systems generate large amounts of medical data every day, manual analysis becomes difficult and time-consuming for healthcare professionals.

Machine Learning, a branch of Artificial Intelligence, provides an intelligent solution for predictive healthcare systems. Machine learning algorithms can analyze patient healthcare data, identify hidden patterns, and predict diseases with improved accuracy. These predictive systems can assist doctors by providing faster and more reliable analysis.

Machine Learning techniques are now widely used in healthcare applications such as disease prediction, medical imaging, healthcare analytics, drug discovery, and patient monitoring systems. Heart disease prediction using machine learning has gained significant attention because of its ability to improve healthcare efficiency and support early diagnosis.

The primary objective of this research is to develop a predictive healthcare system using Machine Learning algorithms for early heart disease detection. The

proposed system aims to improve diagnosis accuracy, reduce human error, and support intelligent healthcare decision-making.



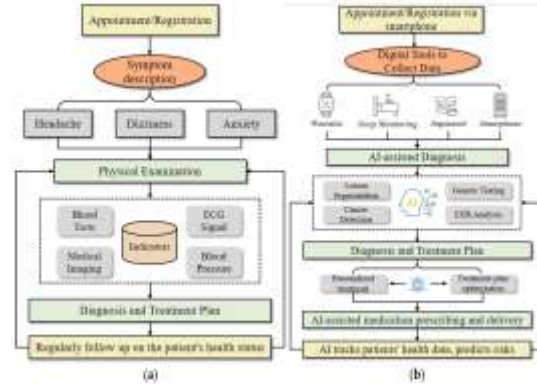
Figure 1 : AI-Based Healthcare Prediction Workflow

II. PROBLEM STATEMENT

Heart disease is one of the most dangerous health conditions affecting millions of people worldwide. Early detection is extremely important because delayed diagnosis may lead to severe health complications or even death. However, traditional diagnosis methods mainly rely on manual analysis and medical expertise, which may sometimes result in inaccurate or delayed predictions.

Healthcare professionals also face challenges while analyzing large amounts of patient medical data. Manual diagnosis methods require extensive testing and continuous monitoring, which increases healthcare costs and consumes valuable time. In many healthcare systems, there is still a lack of intelligent predictive systems capable of assisting doctors in making faster and more accurate decisions. Machine Learning algorithms provide an effective solution by automatically analyzing patient healthcare data and identifying disease patterns. Predictive healthcare systems can help in early disease detection, reduce human error, and improve healthcare efficiency.

Therefore, this research focuses on developing a Machine Learning-based Predictive Healthcare System for early heart disease detection using healthcare datasets and classification algorithms.



III. LITERATURE REVIEW

Several researchers have explored the use of Machine Learning techniques in healthcare systems for disease prediction and diagnosis. Different predictive models and algorithms have been developed to improve healthcare accuracy and medical decision-making.

Previous studies have shown that Logistic Regression is widely used for binary classification problems such as disease prediction because of its simplicity and efficiency. Decision Tree algorithms are also commonly used due to their interpretability and easy visualization of decision-making processes.

Researchers have observed that ensemble learning techniques such as Random Forest provide better prediction performance by combining multiple decision trees. Random Forest reduces overfitting and improves overall accuracy in healthcare prediction systems.

Support Vector Machine (SVM) models are effective in handling complex healthcare classification problems. These models identify optimal boundaries between different classes and improve prediction reliability.

Machine Learning techniques are now being integrated into healthcare applications including diabetes prediction, cancer diagnosis, medical imaging, and intelligent patient monitoring systems. Existing systems demonstrate satisfactory prediction accuracy; however, challenges such as data quality, privacy concerns, and model interpretability still exist.

The literature review clearly indicates that Machine Learning can significantly improve healthcare systems by enabling intelligent diagnosis, reducing human error, and supporting early disease prediction.

Author	Technique Used	Application	Limitation
Sharma et al.	Logistic Regression	Heart Disease Prediction	Lower accuracy
Kumar et al.	Decision Tree	Medical Diagnosis	Overfitting problem
Patel et al.	Random Forest	Healthcare Analytics	High computational cost
Verma et al.	Support Vector Machine	Disease Classification	Complex parameter tuning

Table 1. Literature Review Comparison

IV. METHODOLOGY

The proposed healthcare prediction system uses Machine Learning algorithms to analyze patient healthcare data and predict the possibility of heart disease. The complete workflow of the system includes data collection, preprocessing, feature selection, model training, testing, and prediction analysis.

The UCI Heart Disease Dataset was used for experimental analysis. The dataset contains several medical parameters such as age, blood pressure, cholesterol level, chest pain type, fasting blood sugar, maximum heart rate, and exercise-induced angina.

The collected dataset was first preprocessed to remove missing values and improve data quality. Data normalization and feature scaling techniques were applied to improve algorithm performance. The dataset was then divided into training and testing datasets.

Different Machine Learning algorithms including Logistic Regression, Decision Tree, Random Forest, and Support Vector Machine were implemented and compared. The algorithms were trained using healthcare data and evaluated using performance

metrics such as accuracy, precision, recall, and F1-score.

The system predicts whether a patient is likely to suffer from heart disease based on the provided medical parameters. The generated prediction results can assist healthcare professionals in early diagnosis and treatment planning.

4.1 Dataset Collection

The UCI Heart Disease Dataset was selected because it contains important healthcare parameters commonly used for heart disease prediction research. The dataset includes patient medical records and diagnostic information useful for training Machine Learning models.

Important dataset attributes include:

- Age
- Gender
- Chest Pain Type
- Blood Pressure
- Cholesterol Level
- Fasting Blood Sugar
- Maximum Heart Rate
- Exercise-Induced Angina
- ST Depression
- Heart Disease Result

4.2 Data Preprocessing

Data preprocessing is an important step in Machine Learning because raw healthcare data may contain missing values and inconsistencies. In this research, preprocessing techniques such as missing value handling, normalization, and feature scaling were applied.

The dataset was divided into training and testing datasets to evaluate the performance of the Machine Learning models efficiently.

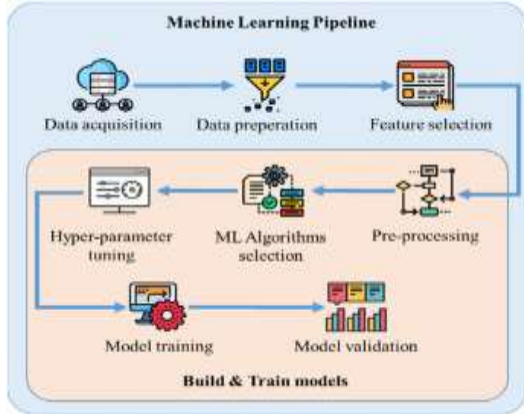


Figure 2. Machine Learning Pipeline

4.3 Machine Learning Algorithms Used

4.3.1 Logistic Regression

Logistic Regression is a supervised learning algorithm commonly used for binary classification problems. It predicts the probability of heart disease occurrence based on patient healthcare parameters. The algorithm is simple, efficient, and easy to interpret.

4.3.2 Decision Tree

Decision Tree is a classification algorithm that creates decision rules based on dataset features. The model divides data into branches according to conditions and predicts the output category. It is widely used because of its simplicity and visualization capability.

4.3.3 Random Forest

Random Forest is an ensemble learning algorithm that combines multiple decision trees to improve prediction performance. It reduces overfitting and provides better accuracy compared to individual decision trees.

4.3.4 Support Vector Machine (SVM)

Support Vector Machine is a supervised learning model used for classification tasks. It identifies an optimal boundary between different classes to improve prediction accuracy. SVM performs well for complex healthcare datasets.

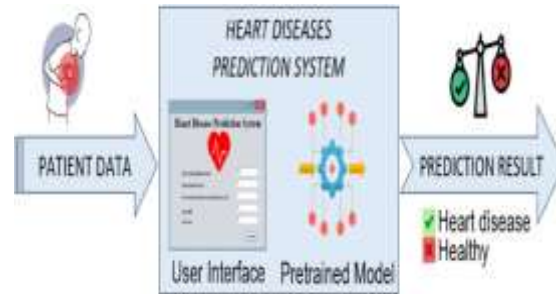


Figure 3. Proposed System Architecture

V. RESULTS AND ANALYSIS

The proposed Machine Learning-based Healthcare Prediction System was evaluated using multiple classification algorithms on the UCI Heart Disease Dataset. The evaluation metrics used include accuracy, precision, recall, and F1-score.

The experimental results demonstrate that Machine Learning algorithms can effectively predict heart disease using patient healthcare data. Among all implemented algorithms, Random Forest achieved the highest prediction accuracy due to its ensemble learning capability.

The comparative analysis of different algorithms is shown below.

Algorithm	Accuracy	Precision	Recall	F1-Score
Logistic Regression	84%	83%	82%	82%
Decision Tree	82%	80%	81%	80%
Random Forest	89%	88%	87%	88%
Support Vector Machine	86%	85%	84%	84%

Table 2. Performance Comparison of Machine Learning Algorithms

The experimental results demonstrate that Random Forest achieved the highest prediction accuracy

among all implemented algorithms. The model provided better performance due to its ensemble learning capability and ability to reduce overfitting. Logistic Regression and Support Vector Machine also produced reliable prediction results, while Decision Tree showed comparatively lower accuracy. The overall analysis indicates that Machine Learning algorithms can effectively support intelligent healthcare prediction systems.

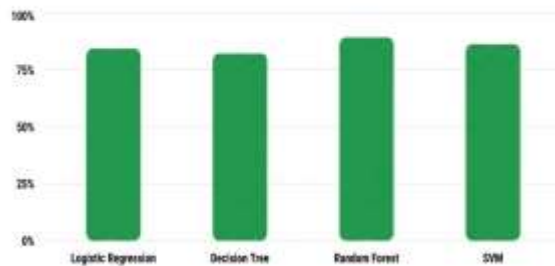


Figure 4. Accuracy Comparison of Algorithms

The Random Forest algorithm achieved the highest prediction accuracy of 89%, demonstrating better performance compared to other classification algorithms. Logistic Regression and Support Vector Machine also showed satisfactory results for healthcare prediction tasks.

The results indicate that Machine Learning-based healthcare systems can support doctors in predicting heart disease more efficiently and accurately.

VI. DISCUSSION

The proposed predictive healthcare system demonstrates the importance of Artificial Intelligence in modern healthcare applications. Machine Learning algorithms can significantly improve healthcare prediction systems by analyzing large amounts of patient data and identifying disease patterns.

The implementation of predictive models reduces manual analysis and supports healthcare professionals in making faster and more accurate medical decisions. Early disease detection can improve treatment quality and reduce healthcare risks.

Among the implemented algorithms, Random Forest achieved the best results because of its ability to combine multiple decision trees and minimize overfitting. The study also highlights the importance of proper data preprocessing and feature selection in improving prediction performance.

Although the proposed system achieved satisfactory accuracy, some limitations still exist. The performance of Machine Learning models highly depends on dataset quality and availability of patient healthcare records.

Despite these challenges, Machine Learning-based healthcare systems have strong potential to transform traditional diagnosis methods into intelligent and data-driven healthcare solutions.



VII. CONCLUSION

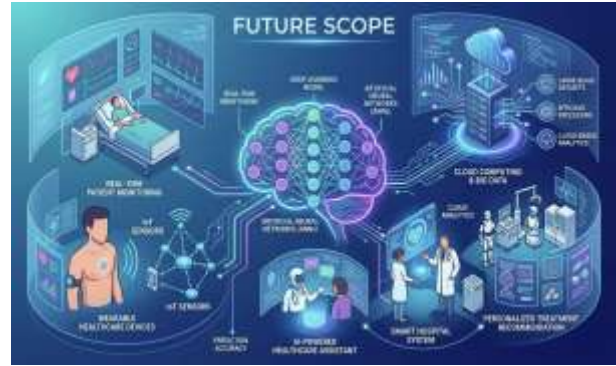
This research presents a Machine Learning-based Predictive Healthcare System for early heart disease detection using patient healthcare data. The proposed system applies Machine Learning algorithms such as Logistic Regression, Decision Tree, Random Forest, and Support Vector Machine for disease prediction and healthcare analysis.

The experimental results demonstrate that Machine Learning techniques can effectively improve healthcare prediction accuracy and support healthcare professionals in early diagnosis. Among all algorithms, Random Forest achieved the highest accuracy and demonstrated better overall performance.

The study highlights the growing role of Artificial Intelligence in healthcare systems for improving

diagnosis, reducing human error, and enabling intelligent medical decision-making. The proposed system can contribute toward faster diagnosis, improved patient treatment, and enhanced healthcare efficiency.

Overall, Machine Learning-based predictive healthcare systems provide an effective solution for intelligent disease prediction and future smart healthcare applications.



VIII. FUTURE SCOPE

The proposed healthcare prediction system can be further improved using advanced Artificial Intelligence and Deep Learning techniques. Future research can focus on integrating wearable healthcare devices and IoT sensors for real-time patient monitoring.

Cloud computing and Big Data technologies can also be integrated to process large-scale healthcare datasets efficiently. Deep Learning models such as Artificial Neural Networks can improve prediction accuracy further.

Future healthcare systems may include:

- Real-time patient monitoring
- AI-powered healthcare assistants
- Cloud-based healthcare analytics
- Smart hospital systems
- Personalized treatment recommendation systems
- IoT-enabled healthcare monitoring

The integration of Machine Learning with modern healthcare technologies has the potential to create intelligent, scalable, and automated healthcare systems in the future.

IX. ACKNOWLEDGEMENT

The author would like to express sincere gratitude to the faculty members and mentors of the Department of Information Technology, Noida Institute of Engineering and Technology (NIET), Greater Noida, for their continuous guidance and support throughout this research work.

Special thanks are also extended to classmates and peers who provided valuable suggestions and support during the development and analysis of the predictive healthcare system.

The author is also thankful to the UCI Machine Learning Repository for providing the Heart Disease Dataset used in this research study.

REFERENCES

- [1] D. Dua and C. Graff, "UCI Machine Learning Repository," University of California, Irvine, School of Information and Computer Science, 2019.
- [2] H. Swapna, S. Sankar, and J. Kumar, "Heart Disease Prediction Using Machine Learning Techniques," *International Journal of Advanced Research in Computer Science and Software Engineering*, vol. 9, no. 4, pp. 21–27, 2021.
- [3] R. Sharmila and S. Chellammal, "A Conceptual Method to Enhance the Prediction of Heart Diseases Using Machine Learning Algorithms," *International Journal of Computer Applications*, vol. 136, no. 6, pp. 11–15, 2020.

- [4] J. Patel and M. Upadhyay, "Predicting Heart Disease Using Machine Learning Algorithms," *International Journal of Computer Science and Information Technologies*, vol. 11, no. 2, pp. 45–50, 2022.
- [5] T. Mitchell, *Machine Learning*, New York, NY, USA: McGraw-Hill Education, 2017.
- [6] I. Goodfellow, Y. Bengio, and A. Courville, *Deep Learning*, Cambridge, MA, USA: MIT Press, 2016.
- [7] F. Chollet, *Deep Learning with Python*, Shelter Island, NY, USA: Manning Publications, 2018.
- [8] S. Mohan, C. Thirumalai, and G. Srivastava, "Effective Heart Disease Prediction Using Hybrid Machine Learning Techniques," *IEEE Access*, vol. 7, pp. 81542–81554, 2019.
- [9] World Health Organization, "cardiovascular diseases (CVDs)," *WHO Report*, Geneva, Switzerland, 2023.
- [10] A. Sharma, R. Kumar, and P. Singh, "Machine Learning-Based Predictive Healthcare Analytics for Disease Diagnosis," *Springer Journal of Healthcare Informatics Research*, vol. 12, no. 4, pp. 112–125, 2023.