

Cloud Based IoT Data Analytics Platform

MADESH T¹, KEERTHIVASAN K², MALA UDAY CHANDRA³, KALYANI D⁴

^{1,2,3} UG Student, Department of Computer Science and Engineering, School of Engineering and Technology, Dhanalakshmi Srinivasan University, Trichy, Tamil Nadu.

⁴ Assistant Professor, Department of Computer Science and Engineering, Dhanalakshmi Srinivasan Institute of Technology, Trichy, Tamil Nadu.

Abstract- *The Cloud Based IoT Data Analytics Platform is designed to collect, store, process, and analyze large volumes of data generated from Internet of Things (IoT) devices using cloud computing technologies. With the rapid growth of IoT applications, numerous sensors and smart devices continuously generate data related to environmental conditions, industrial processes, and system performance. Managing and analyzing this large amount of data using traditional systems is difficult due to limited storage capacity and processing capabilities. To overcome these challenges, cloud computing provides scalable storage, high computational power, and remote accessibility. In this system, IoT sensors are used to collect environmental parameters such as temperature, humidity, gas concentration, or other sensor readings. These sensors are connected to a microcontroller or IoT device such as ESP32 or NodeMCU, which acts as the gateway for transmitting the collected data. The IoT device sends the sensor data to a cloud server through internet connectivity using communication protocols such as HTTP or MQTT. The cloud infrastructure receives the incoming data and stores it securely in a cloud database for further processing and analysis. Once the data is stored in the cloud, data analytics techniques are applied to process and analyze the collected information. The analytics module performs operations such as calculating averages, identifying trends, detecting abnormal conditions, and generating useful insights from the collected data. The processed results are then visualized through an interactive real-time dashboard. The dashboard displays sensor readings in the form of graphs, charts, and reports, enabling users to monitor the system performance and environmental conditions remotely.*

I. INTRODUCTION

The rapid growth of the Internet of Things (IoT) has enabled devices to communicate and exchange data through the internet. IoT devices generate large amounts of data that require efficient storage and processing mechanisms. Cloud computing provides scalable infrastructure for storing and processing this

data. By integrating IoT with cloud computing and analytics, it becomes possible to monitor systems in real time and gain useful insights from the collected data. This project focuses on developing a cloud-based IoT platform that collects sensor data, stores it in the cloud, analyzes it, and displays the results through a web dashboard.

II. LITERATURE SURVEY

The integration of the Internet of Things (IoT) with cloud computing has gained significant attention in recent years due to its ability to manage large volumes of data generated by connected devices. Many researchers have explored different approaches to design scalable and efficient IoT systems that use cloud infrastructure for data storage, processing, and analytics. These studies emphasize the importance of cloud platforms in handling the massive amount of data produced by IoT sensors and devices.

Several research works have proposed IoT-based monitoring systems where sensors collect environmental or operational data and transmit it to cloud servers for processing. Cloud computing enables these systems to store large datasets, perform complex computations, and provide remote accessibility to users. Researchers have shown that integrating IoT with cloud platforms improves system scalability, reliability, and flexibility compared to traditional standalone monitoring systems. In many studies, cloud-based IoT platforms have been used for applications such as smart agriculture,

III. EXISTING SYSTEM

In the existing system, monitoring and data collection are usually performed using traditional methods

without proper integration of cloud computing and advanced analytics. Most systems rely on standalone devices or local storage to collect and store sensor data. These systems generally use basic monitoring equipment where the collected data is displayed locally on a device or stored in a limited storage system.

In many traditional monitoring systems, sensor data such as temperature, humidity, or gas levels are collected using sensors connected to microcontrollers. However, the collected data is often stored locally in memory devices or computers without being transmitted to a centralized cloud platform. Because of this, accessing the data remotely becomes difficult, and users must be physically present near the monitoring system to observe the readings.

IV. DRAWBACKS OF EXISTING

SYSTEM - The existing monitoring systems have several limitations that reduce their efficiency and reliability. In traditional systems, the collected sensor data is usually stored locally, which results in limited storage capacity and makes long-term data management difficult. These systems also lack real-time remote monitoring, meaning users must be physically present near the device to observe the sensor readings. Another major drawback is the absence of advanced data analytics, as most existing systems only display raw data without analyzing trends or detecting abnormal conditions. Additionally, traditional systems have poor scalability, making it difficult to manage when the number of IoT devices increases. Maintenance and monitoring often require manual effort, which increases operational time and cost. Security is also a concern because locally stored data may not have strong protection mechanisms. Furthermore, many existing systems do not provide proper data visualization tools such as dashboards or graphical reports, making it difficult for users to understand patterns and make informed decisions. These limitations highlight the need for a more advanced cloudbased IoT data analytics platform.

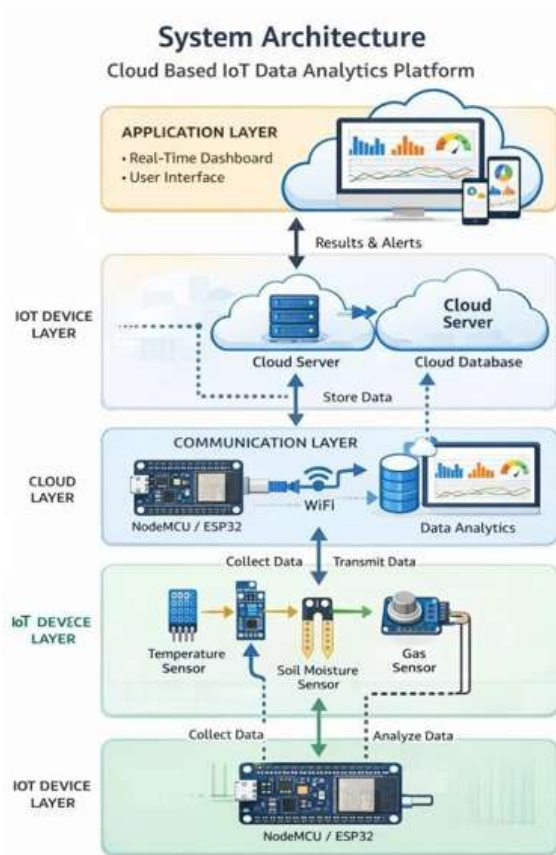
V. PROPOSED SYSTEM

The proposed system introduces a Cloud Based IoT Data Analytics Platform that integrates IoT devices, cloud computing, and data analytics to provide efficient real-time monitoring and analysis. In this system, IoT sensors are used to collect environmental or operational data such as temperature, humidity, and gas levels. These sensors are connected to a microcontroller such as ESP32 or NodeMCU, which acts as the gateway for transmitting the collected data to the cloud through internet connectivity.

The sensor data is sent to a cloud server where it is stored in a cloud database. The cloud platform provides scalable storage and allows large volumes of IoT data to be stored and managed efficiently. After storing the data, analytics techniques are applied to process the collected information. The system analyzes the data to identify patterns, calculate averages, and detect abnormal conditions.

VI. SYSTEM ARCHITECTURE:

The System Architecture of the Cloud Based IoT Data Analytics Platform explains how different components work together to collect, transmit, store, and analyze IoT data. The architecture mainly consists of four layers: IoT device layer, communication layer, cloud layer, and application layer. In the IoT device layer, various sensors such as temperature, humidity, or gas sensors are connected to a microcontroller like ESP32 or NodeMCU. These sensors continuously collect environmental data and send it to the microcontroller. The microcontroller processes the sensor readings and prepares the data for transmission. In the communication layer, the IoT device sends the collected data to the cloud server through internet connectivity using communication protocols such as HTTP or MQTT. This layer ensures secure and reliable transmission of data between the IoT devices and the cloud platform. The cloud layer is responsible for storing and processing the incoming data. The sensor data received from IoT devices is stored in a cloud database. The cloud platform provides scalable storage and computing resources, that allow large amounts of data to be handled efficiently.



VII. VISION-BASED FEATURE EXTRACTION

Vision-based feature extraction refers to the process of identifying and extracting important features or patterns from visual data such as images or video streams. In IoT-based systems, vision-based techniques can be used to monitor environments, detect objects, and analyze visual information collected through cameras or imaging sensors. These techniques use image processing and computer vision algorithms to identify meaningful features from visual inputs.

In the context of a Cloud Based IoT Data Analytics Platform, vision-based feature extraction can be integrated to enhance monitoring capabilities. Cameras connected to IoT devices capture images or video data. This visual data is then processed using computer vision techniques to extract relevant features such as object shapes, movement patterns, color information, or abnormal events.

The extracted features are transmitted to the cloud platform where advanced analytics and machine learning models analyze the data further. This allows the system to detect specific events, monitor environmental changes, or identify unusual activities automatically. The processed results can then be displayed on a monitoring dashboard, enabling users to view insights and take appropriate actions.

By combining IoT devices with vision-based feature extraction techniques, the system becomes more intelligent and capable of performing automated monitoring and analysis. This approach is widely used in applications such as smart surveillance, traffic monitoring, industrial inspection, and smart city systems.

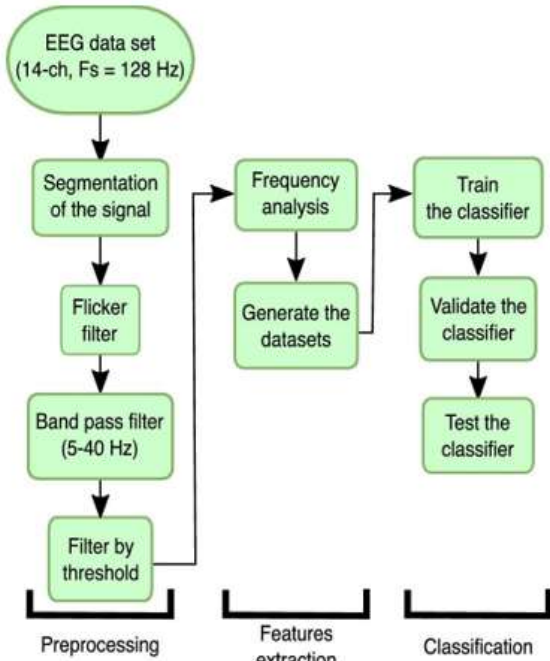


VIII. TOI SPECTRUM FEATURE EXTRACTION

TOI Spectrum Feature Extraction is a technique used to identify important patterns or characteristics from signal or sensor data by analyzing its frequency spectrum. In IoT systems, sensors continuously collect data such as vibration signals, environmental readings, or other time-based measurements. These signals often contain hidden information that can be revealed by converting them from the time domain to the frequency domain using spectrum analysis techniques.

The TOI spectrum feature extraction process helps in identifying dominant frequencies, signal energy, and other statistical properties that describe the behavior of the system being monitored. By analyzing these spectral features, the system can detect abnormalities, recognize patterns, or classify different types of

signals. This is especially useful in applications such as predictive maintenance, environmental monitoring, smart agriculture, and industrial IoT systems.



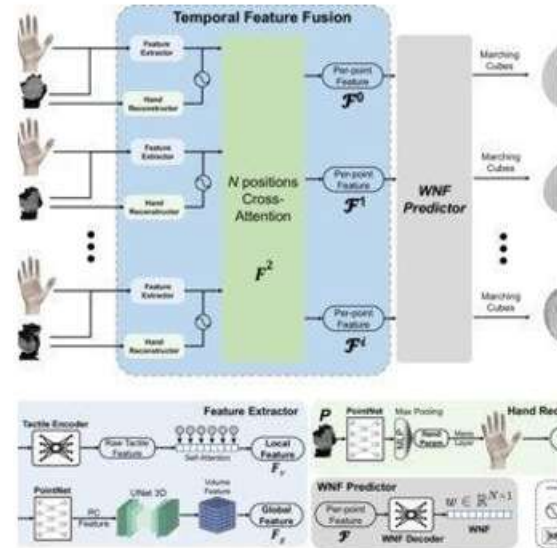
In a cloud-based IoT analytics platform, the sensor data is first collected and transmitted to a processing module. The signal is then converted into a spectrum using algorithms such as Fast Fourier Transform (FFT). After the spectrum is generated, important features like peak frequency, spectral energy, and bandwidth are extracted. These features are then sent to the analytics engine where machine learning or statistical analysis can be performed to detect anomalies or make predictions. Finally, the results are displayed on a monitoring dashboard for users to analyze and make decisions.

IX. MULTI-MODALITY FUSION

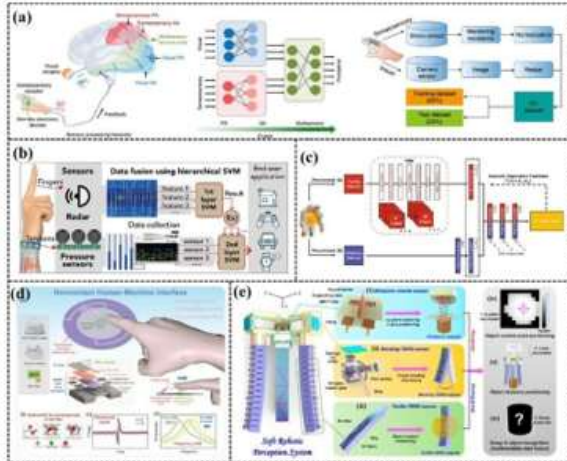
Fusion of Visual and Temporal Features Multi-modality fusion refers to the process of combining information from multiple types of data sources to improve the accuracy and performance of a system.

In IoT-based intelligent monitoring systems, data can come from different modalities such as visual data (images or video from cameras) and temporal data (time-series sensor readings like temperature,

humidity, vibration, etc.). By combining these different types of data, the system can gain a more comprehensive understanding of the environment.



In the proposed system, visual features are extracted from images or video streams using computer vision techniques. These features may include object shapes, motion patterns, color distributions, or detected objects. At the same time, temporal features are obtained from time-series sensor data collected by IoT devices. Temporal features represent how the data changes over time, such as trends, periodic patterns, or abnormal variations in sensor readings. The fusion process combines these visual and temporal features into a unified data representation. This combined information is then analyzed using machine learning or data analytics algorithms to detect patterns, identify abnormal events, or generate predictions. For example, in a smart monitoring system, a camera may detect movement while sensors detect environmental changes. By fusing both types of data, the system can make more accurate decisions compared to using a single data source.

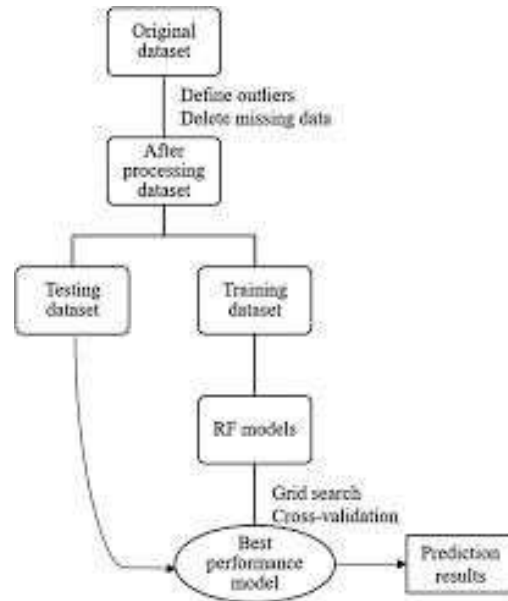


The fused data is then transmitted to the cloud platform where further analysis and visualization take place. The results are displayed on a real-time dashboard, allowing users to monitor system behavior and respond quickly to detected events. Multi-modality fusion improves the reliability, accuracy, and intelligence of IoT analytics systems.

X. MACHINE LEARNING MODELS

Machine Learning models play an important role in analyzing and interpreting large amounts of data generated by IoT devices. In a Cloud Based IoT Data Analytics Platform, machine learning algorithms are used to process the collected sensor data and identify patterns, trends, and anomalies. These models help the system make intelligent decisions by learning from historical data and improving performance over time.

The sensor data collected from IoT devices is first stored in the cloud database. This data is then used to train machine learning models. The models analyze the data to understand relationships between different parameters such as temperature, humidity, gas levels, or other environmental conditions. Once the model is trained, it can predict future values, detect abnormal behavior, or classify different events based on the incoming data.



XI. MULTI-MODALITY FUSION

Multi-modality fusion is a technique used to combine data from different sources or modalities to improve the accuracy and reliability of a system. In IoT-based analytics platforms, data can come from multiple inputs such as sensors, cameras, and time-series signals. Instead of analyzing each data source separately, multi-modality fusion integrates them into a single representation so that the system can better understand complex situations.

In the Cloud Based IoT Data Analytics Platform, different types of data such as environmental sensor readings (temperature, humidity, gas levels) and visual data from cameras can be collected simultaneously.

XII. MACHINE LEARNING MODELS

Machine Learning models are used in the Cloud Based IoT Data Analytics Platform to analyze large amounts of data generated by IoT devices and extract useful insights. IoT sensors continuously collect data such as temperature, humidity, gas levels, or other environmental parameters. This data is stored in the cloud database and later processed using machine learning techniques to identify patterns and make predictions.

Before applying machine learning models, the collected data is first preprocessed. Data preprocessing involves cleaning the data, removing noise, and selecting important features from the dataset. After preprocessing, the dataset is divided into training and testing sets. The training data is used to train the machine learning model so that it can learn combining these features into a unified dataset. Machine learning or analytics algorithms then analyze the fused data to detect patterns, recognize events, or identify abnormal conditions. This approach helps the system make better decisions because it uses information from multiple perspectives rather than relying on a single data source. Multi-modality fusion improves system performance in many applications such as smart surveillance, industrial monitoring, healthcare systems, and smart cities. By integrating multiple types of data, the platform becomes more intelligent and capable of providing accurate monitoring and predictive analysis. patterns and relationships within the data. Different types of machine learning algorithms can be used depending on the application. Regression models are used to predict future sensor values based on historical data. Classification algorithms help categorize different environmental conditions or system states. Anomaly detection models are used to identify abnormal sensor readings that may indicate faults or unusual events in the system.

XIII. FUTURE ENHANCEMENTS

The Cloud Based IoT Data Analytics Platform can be further improved by incorporating several advanced technologies and additional features. One possible enhancement is the integration of advanced machine learning and artificial intelligence algorithms to provide more accurate predictions and automated decisionmaking. By applying deep learning techniques, the system can analyze complex patterns in IoT data and improve anomaly detection capabilities.

Another future enhancement is the implementation of edge computing, where some data processing is performed directly on IoT devices before sending it to the cloud. This reduces network latency, decreases bandwidth usage, and improves real-time processing

performance. Edge computing can also enhance system reliability by allowing basic analysis even when internet connectivity is limited.

The system can also be enhanced by integrating mobile applications that allow users to monitor IoT data and receive alerts directly on their smartphones. This will make the monitoring process more convenient and accessible from anywhere.

In addition, security mechanisms can be strengthened by implementing encryption, secure authentication, and blockchain-based data protection methods. These technologies can help ensure that the transmitted data remains secure and protected from unauthorized access.

XIV. SYSTEM MODULES

The Cloud Based IoT Data Analytics Platform is divided into several modules to ensure efficient data collection, processing, and monitoring. Each module performs a specific function in the overall system architecture.

The first module is the IoT Data Collection Module. In this module, various IoT sensors such as temperature, humidity, or gas sensors are used to collect environmental data. These sensors are connected to a microcontroller such as ESP32 or NodeMCU, which gathers the sensor readings and prepares the data for transmission.

The second module is the Data Transmission Module. In this module, the collected sensor data is transmitted from the IoT device to the cloud server using internet connectivity. Communication protocols such as HTTP or MQTT are used to ensure reliable and secure data transfer.

The third module is the Cloud Data Storage Module. This module is responsible for storing the incoming data in a cloud database. The cloud platform provides scalable storage, allowing large amounts of IoT data to be stored and managed efficiently. data analytics techniques and machine learning models. The system processes the data to identify patterns, calculate statistics, and detect abnormal conditions.

The final module is the Visualization and Monitoring Module. This module provides a user interface in the form of a web-based dashboard. The dashboard displays real-time sensor data using charts, graphs, and reports. Users can monitor system performance, view historical data, and receive alerts when abnormal conditions occur. Together, these modules work collaboratively to collect, process, analyze, and visualize IoT data effectively in a cloud-based environment.

XV. CONCLUSION

The Cloud Based IoT Data Analytics Platform provides an efficient solution for collecting, storing, and analyzing data generated by IoT devices. In this system, IoT sensors are used to collect environmental or operational data, which is then transmitted to a cloud platform through internet connectivity. The cloud infrastructure stores the data securely and provides powerful computing resources for analyzing large volumes of sensor data. By applying data analytics and machine learning techniques, the system can identify patterns, detect abnormal conditions, and generate useful insights from the collected data. The analyzed results are displayed on a real-time dashboard that allows users to monitor the system from anywhere. This improves decision-making and reduces the need for manual monitoring.

REFERENCES

- [1] A. Botta, W. De Donato, V. Persico, and A. Pescapé, "Integration of Cloud Computing and Internet of Things: A Survey," *Future Generation Computer Systems*, vol. 56, pp. 684–700, 2016.
- [2] L. Atzori, A. Iera, and G. Morabito, "The Internet of Things: A Survey," *Computer Networks*, vol. 54, no. 15, pp. 2787–2805, 2010.
- [3] S. Li, L. Da Xu, and S. Zhao, "The Internet of Things: A Survey," *Information Systems Frontiers*, vol. 17, no. 2, pp. 243–259, 2015.
- [4] M. Chen, S. Mao, and Y. Liu, "Big Data: A Survey," *Mobile Networks and Applications*, vol. 19, no. 2, pp. 171–209, 2014.
- [5] D. Evans, "The Internet of Things: How the Next Evolution of the Internet is Changing Everything," Cisco Internet Business Solutions Group, 2011.
- [6] J. Gubbi, R. Buyya, S. Marusic, and M. Palaniswami, "Internet of Things (IoT): A Vision, Architectural Elements, and Future Directions," *Future Generation Computer Systems*, vol. 29, no. 7, pp. 1645–1660, 2013.
- [7] K. Ashton, "That „Internet of Things“ Thing," *RFID Journal*, 2009.
- [8] H. Ning and Z. Wang, "Future Internet of Things Architecture: Like Mankind Neural System or Social Organization Framework?" *IEEE Communications Letters*, vol. 15, no. 4, pp. 461–463, 2011.