

Creating A Web Application for Localization of OpenStreetMap

VANDAVASI GODADEVI¹, DR. V. RAMESH²

¹PG Student, Department of Computer Application, SCSVMV deemed to be University, Kanchipuram, Tamil Nadu, India

²Head of the Department, Department of Computer Application, SCSVMV deemed to be University, Kanchipuram, Tamil Nadu, India

Abstract- This project presents the design and development of a modern, full-stack web-based application that integrates interactive mapping, secure user authentication, and efficient database management to provide a scalable, reliable, and user-friendly platform. The system is developed using advanced web technologies such as Next.js and React for the frontend, Prisma ORM for backend data handling, and powerful geospatial visualization libraries like Leaflet and MapLibre for rendering dynamic maps. The primary objective of this application is to enable users to interact with geospatial data in a seamless and intuitive manner. By leveraging interactive map interfaces, users can explore, visualize, and manage location-based information in real time. The system supports various map functionalities such as zooming, panning, and marker placement, allowing users to gain meaningful insights from geographic data. This makes the application highly suitable for use cases such as location tracking, geographic analysis, event mapping, and navigation-based services. To ensure secure access and data privacy, the application incorporates robust authentication and authorization mechanisms. Users can register, log in, and securely access personalized features within the system. The authentication flow is designed to protect user data and prevent unauthorized access, thereby enhancing system reliability and trustworthiness. Additionally, session management and validation techniques are implemented to maintain consistent and secure user interactions. On the backend, Prisma ORM is used to efficiently manage database operations, including data storage, retrieval, updating, and deletion. The structured database design ensures data integrity and consistency, while Prisma simplifies complex queries and enhances development productivity. The system architecture follows a modular and API-driven approach, enabling smooth communication between frontend and backend components. The user interface is designed to be responsive, interactive, and accessible across multiple devices, including desktops, tablets, and smartphones. Modern UI components and validation techniques are incorporated to enhance user experience and minimize input errors. The application also emphasizes performance

optimization to ensure fast loading times and smooth interactions, even when handling large datasets. Furthermore, the project adopts best practices in software development, including component-based architecture, code reusability, and maintainability. This ensures that the system can be easily extended or modified to accommodate future enhancements such as real-time tracking, advanced analytics, or integration with external APIs.

I. INTRODUCTION

In the modern digital era, web applications have become an integral part of everyday life, enabling users to access services, manage data, and interact with systems in real time. With the rapid evolution of internet technologies, there is a growing demand for applications that are not only efficient but also interactive, secure, and scalable. One of the most significant advancements in this domain is the integration of geospatial technologies into web-based systems, which allows users to visualize, analyze, and interact with location-based data in an intuitive and meaningful manner. This project focuses on the development of a full-stack web application that integrates interactive mapping, user authentication, and database management into a unified platform, thereby addressing the increasing need for intelligent and user-friendly digital solutions. The concept of geospatial visualization has gained considerable importance in recent years due to its wide range of applications in fields such as navigation, urban planning, logistics, disaster management, and social networking. Traditional systems often rely on static maps or limited data representation techniques, which restrict user interaction and reduce the overall effectiveness of data analysis. However, with the emergence of modern web technologies, it is now possible to develop dynamic and interactive map-

based applications that provide real-time feedback and enhanced user experiences. In this project, mapping libraries such as Leaflet and MapLibre are utilized to render interactive maps, enabling users to explore geographic data through features such as zooming, panning, and marker placement. These capabilities significantly improve the usability and functionality of the system, making it more adaptable to real-world scenarios.

Another important aspect of modern web applications is the need for secure and reliable user authentication mechanisms. As applications increasingly handle sensitive user data, ensuring data privacy and protection has become a critical requirement. This project incorporates robust authentication and authorization techniques that allow users to securely register, log in, and access personalized features within the system. The authentication process is designed to prevent unauthorized access and ensure that user data remains protected at all times. By implementing session management and validation techniques, the system maintains consistency and reliability in user interactions, thereby enhancing user trust and system credibility. The backend of the application plays a crucial role in managing data and processing user requests efficiently. In this project, Prisma ORM is used as a powerful tool for database management, enabling seamless interaction between the application and the underlying database. Prisma simplifies complex database operations such as data insertion, retrieval, updating, and deletion, while ensuring data integrity and consistency. The use of a structured database model allows the system to handle large volumes of data efficiently, making it scalable and adaptable to future requirements. Furthermore, the backend follows an API-driven approach, which facilitates smooth communication between the frontend and backend components, ensuring a well-coordinated and efficient system architecture. The frontend of the application is developed using Next.js and React, which are widely recognized for their performance, flexibility, and component-based architecture. These technologies enable the creation of a responsive and interactive user interface that enhances the overall user experience. The application is designed to be compatible with multiple devices, including desktops, tablets, and smartphones, ensuring accessibility for a wide range of users. Modern UI

components and input validation techniques are incorporated to improve usability and reduce errors, making the system more efficient and user-friendly. Additionally, performance optimization techniques are applied to ensure fast loading times and smooth interactions, even when handling complex data and map visualizations. The motivation behind this project stems from the need to bridge the gap between traditional data management systems and modern interactive web applications. Many existing systems either focus on data storage or provide limited support for geospatial visualization, resulting in fragmented solutions that lack efficiency and usability. By integrating mapping functionalities, authentication mechanisms, and database management into a single platform, this project aims to provide a comprehensive solution that addresses these limitations. The system not only enhances data visualization but also ensures secure access and efficient data handling, making it suitable for a wide range of applications.

In addition to its practical applications, this project also emphasizes the importance of following best practices in software development. The use of a modular architecture, reusable components, and clean coding standards ensures that the system is maintainable and extensible. This approach allows for easy integration of additional features in the future, such as real-time tracking, advanced analytics, and third-party API integrations. By adopting modern development methodologies, the project demonstrates how complex systems can be designed and implemented in a structured and efficient manner. Overall, this project represents a comprehensive effort to develop a modern, scalable, and secure web application that leverages the power of geospatial technologies and full-stack development frameworks. It highlights the potential of combining frontend innovation, backend efficiency, and interactive mapping to create solutions that are both practical and adaptable to real-world needs. The system not only improves the way users interact with geographic data but also sets a foundation for future advancements in web-based geospatial applications. Through this project, the significance of integrating multiple technologies to build efficient and user-centric systems is clearly demonstrated, making it a valuable contribution to the field of web development and geographic information systems.

II. LITERATURE REVIEW

Geographic Information Systems (GIS) have evolved from desktop-based applications to web-enabled platforms that provide real-time access to spatial data through internet technologies. According to research in Web GIS, interactive map visualization improves decision-making by enabling users to explore, analyze, and interpret geographic information dynamically. Modern GIS platforms support location-based services, navigation, urban planning, and environmental monitoring through web interfaces.

Recent studies emphasize that web-based GIS applications offer greater accessibility, scalability, and interoperability compared to traditional desktop GIS systems. However, many existing solutions face challenges related to user interaction, multilingual support, and real-time data management. These limitations have motivated the development of more advanced geospatial platforms that integrate modern web technologies with interactive mapping capabilities.

2.2 OpenStreetMap-Based Localization Systems

OpenStreetMap (OSM) has emerged as one of the most widely used open-source geographic databases. Several researchers have explored OSM-based localization systems to improve map accessibility for regional language users. Localization involves translating map labels, place names, and geographic descriptions into native languages while preserving spatial accuracy.

Studies indicate that localized mapping platforms significantly improve usability and user engagement, especially in multilingual countries. However, existing localization systems often lack efficient contribution management, real-time translation tracking, and contributor performance monitoring. These shortcomings create opportunities for developing enhanced localization platforms that support community-driven translation workflows.

2.3 Interactive Mapping Technologies

Interactive mapping libraries such as Leaflet, OpenLayers, and MapLibre have become essential tools for modern geospatial application development. Research demonstrates that these libraries provide

lightweight and responsive solutions for rendering maps on web browsers.

Leaflet is widely recognized for its simplicity and flexibility, while MapLibre offers advanced vector tile rendering capabilities. Previous studies show that combining these technologies enables efficient visualization of large-scale geographic datasets. Despite their advantages, many applications use mapping libraries only for visualization purposes and do not integrate them effectively with translation management and localization systems.

2.4 User Authentication and Security Mechanisms

Security remains a critical concern in web applications that manage user-generated content and sensitive information. Authentication mechanisms such as OAuth, JSON Web Tokens (JWT), and session-based authentication have been extensively studied to enhance application security.

Researchers have found that OAuth-based authentication improves user convenience and security by allowing authentication through trusted providers. Session management techniques further enhance system reliability by maintaining secure user interactions. Nevertheless, several localization platforms continue to rely on basic authentication methods, increasing vulnerability to unauthorized access and data manipulation.

2.5 Database Management Using ORM Frameworks

Efficient data management is essential for scalable web applications. Traditional database interaction methods often require extensive SQL programming and can lead to maintenance challenges. Object Relational Mapping (ORM) frameworks have been proposed to simplify database operations and improve development efficiency.

Prisma ORM has gained attention due to its type safety, automatic schema generation, and efficient query handling. Research suggests that ORM frameworks reduce development complexity while ensuring data consistency and integrity. Applications utilizing Prisma demonstrate improved maintainability and scalability compared to systems relying on conventional database access techniques.

2.6 Frontend Development Frameworks

Modern frontend development increasingly relies on component-based frameworks such as React and Next.js. React enables developers to build reusable user interface components, while Next.js enhances performance through server-side rendering and optimized routing.

Several studies report that React-based applications provide improved responsiveness, maintainability, and user experience. Next.js further improves application performance by reducing page load times and supporting hybrid rendering strategies. These characteristics make both technologies suitable for developing large-scale interactive web applications.

2.7 Research Gap Analysis

The review of existing literature reveals several limitations in current localization and mapping platforms:

- Limited support for multilingual map localization.
- Lack of integrated contributor management systems.
- Insufficient monitoring of translation progress and user contributions.
- Weak integration between mapping interfaces and translation workflows.
- Limited use of modern scalable web architectures.
- Inadequate security and authentication mechanisms in some existing systems.

Most existing studies focus either on geographic visualization or language localization independently.

III. PROBLEM STATEMENT

In the current digital landscape, web applications play a crucial role in managing and presenting data across various domains. However, many existing systems are limited in their ability to effectively integrate data management, user interaction, and geospatial visualization into a single unified platform. Most traditional applications are designed either for basic data storage or for simple visualization, but they often fail to provide an interactive and user-centric experience. This lack of integration results in fragmented systems where users must rely on multiple tools to perform tasks such as data entry, location

tracking, and visualization, leading to inefficiency and increased complexity. One of the primary challenges identified is the limited availability of applications that can dynamically handle geospatial data in real time. Many conventional systems rely on static maps or pre-rendered images, which do not allow users to interact with the data effectively. This restricts the ability of users to explore geographic information, analyze spatial relationships, or make informed decisions based on location-based insights. As the demand for location-aware services continues to grow in areas such as transportation, logistics, urban planning, and navigation, the need for interactive and dynamic mapping solutions has become increasingly important. Another significant issue is the lack of secure and reliable user authentication mechanisms in many web applications. With the increasing amount of sensitive data being stored and processed online, ensuring data privacy and protection has become a critical requirement. Inadequate authentication systems can lead to unauthorized access, data breaches, and misuse of information. Many existing systems either implement weak security measures or do not provide proper role-based access control, which compromises the overall reliability and trustworthiness of the application. Therefore, there is a strong need for a system that incorporates robust authentication and authorization features to safeguard user data.

In addition to security concerns, inefficient database management is another major problem faced by traditional applications. Handling large volumes of data requires a structured and optimized approach to storage, retrieval, and manipulation. However, many systems struggle with performance issues due to poorly designed database schemas, lack of efficient querying mechanisms, and absence of proper data validation techniques. These limitations can result in slow response times, data inconsistency, and reduced system performance. As applications scale and the number of users increases, these issues become more pronounced, highlighting the need for an efficient and scalable database solution.

Furthermore, many existing applications lack a responsive and user-friendly interface, which affects the overall user experience. In today's multi-device environment, users expect applications to function seamlessly across desktops, tablets, and mobile

devices. However, traditional systems often fail to adapt to different screen sizes and resolutions, leading to poor usability and accessibility. Additionally, the absence of intuitive design and proper user interaction mechanisms makes it difficult for users to navigate the system and perform tasks efficiently. This creates a barrier to user adoption and reduces the effectiveness of the application.

Another challenge lies in the lack of scalability and maintainability in many web-based systems. As user demands and data requirements grow, applications must be able to scale accordingly without compromising performance. However, systems that are not designed with modular architecture and clean coding practices often face difficulties in accommodating new features or handling increased workloads. This results in higher maintenance costs and reduced flexibility for future enhancements. Therefore, it is essential to develop a system that follows modern development practices, ensuring scalability, maintainability, and ease of extension.

The absence of a unified system that combines interactive mapping, secure authentication, and efficient data management creates a significant gap in the current technological landscape. Users require a platform that not only allows them to store and manage data but also provides meaningful insights through visualization and interaction. Without such a system, users are forced to rely on multiple disconnected tools, which increases the complexity of workflows and reduces productivity.

To address these challenges, there is a need for a comprehensive solution that integrates modern web technologies with geospatial capabilities and secure data management practices. The proposed project aims to overcome the limitations of existing systems by developing a full-stack web application that provides interactive map-based visualization, robust user authentication, and efficient database operations within a single platform. By doing so, the system seeks to enhance user experience, improve data accessibility, and ensure security and scalability.

IV. SYSTEM ANALYSIS

Existing map localization and geospatial applications primarily focus on displaying geographic information and providing basic navigation services. Open-source mapping platforms such as OpenStreetMap allow users to contribute and edit geographic data; however, many existing systems lack comprehensive localization support for regional languages. Most applications provide limited facilities for tracking translation progress, managing contributors, and maintaining multilingual map content.

Furthermore, traditional localization systems often rely on manual workflows that are time-consuming and difficult to monitor. The absence of centralized translation management leads to inconsistencies in localized content. Many platforms also suffer from inadequate user authentication mechanisms, limited scalability, and poor integration between mapping interfaces and translation management modules.

A. Existing System

The existing systems used for map localization and geospatial data management mainly focus on displaying geographic information and allowing users to contribute map-related content. Platforms such as OpenStreetMap provide basic facilities for editing map data and viewing geographic locations. However, most existing systems are designed primarily for map visualization and do not offer a complete solution for multilingual localization, contributor management, and translation workflow monitoring.

Many current localization platforms depend on manual translation processes where contributors translate map labels without a centralized mechanism for tracking progress or validating contributions. As a result, translation management becomes difficult when handling large datasets and multiple languages. Furthermore, existing systems often provide limited support for monitoring contributor activities, maintaining translation history, and measuring localization progress.

Most traditional systems also lack integration between map visualization and translation management. Users frequently need to switch between different tools for viewing maps, translating content, and managing

localization data. This fragmented approach reduces productivity and creates inconsistencies in translated map information.

Security is another challenge in many existing systems. Basic authentication mechanisms and limited access control policies may expose user data to unauthorized access. Additionally, some systems are not designed using modern scalable architectures, making it difficult to accommodate increasing numbers of users and contributions.

B. System Architecture

The proposed OSM Localization Platform is designed using a three-tier architecture consisting of the Presentation Layer, Application Layer, and Database Layer. This architectural model ensures better scalability, maintainability, security, and efficient communication between different components of the system. The architecture enables seamless integration of user authentication, map visualization, translation management, and database operations within a unified web-based environment. By separating the system into distinct layers, the application achieves improved flexibility and allows independent modification or enhancement of individual components without affecting the overall functionality of the system.

The Presentation Layer serves as the user interface of the system and is developed using modern frontend technologies such as Next.js and React. This layer is responsible for handling user interactions and displaying information in an intuitive and responsive manner. Through this interface, users can register, log in, select languages, contribute translations, view localization progress, and interact with geographic data displayed on maps. The responsive design ensures compatibility across multiple devices including desktops, tablets, and smartphones, thereby enhancing accessibility and user experience. The frontend communicates with the backend through API requests and dynamically updates content based on user actions and system responses.

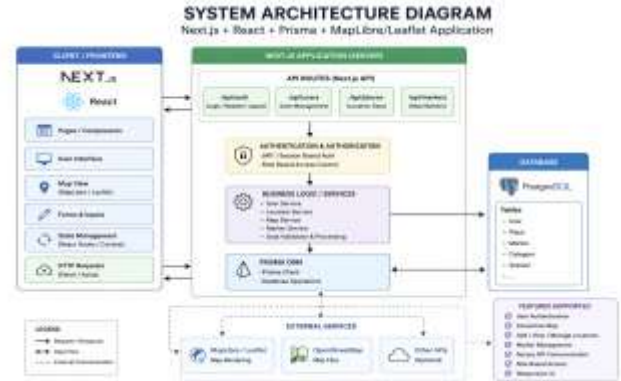


Fig. 1. System Architecture Diagram

C. Data Flow

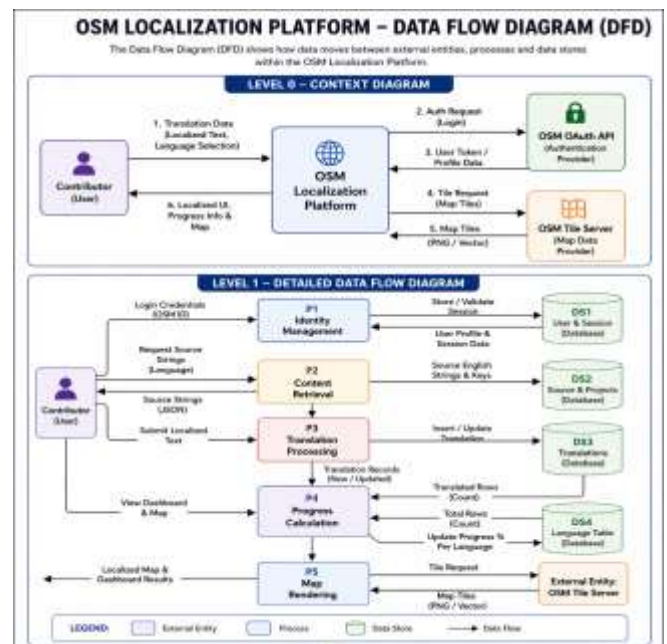


Fig. 2. Data Flow Diagram

The Data Flow Diagram (DFD) illustrates how data moves through the OSM Localization Platform and how different system components interact to process user requests efficiently. It provides a graphical representation of the flow of information between users, system modules, processes, and the database. The DFD helps in understanding how data is collected, processed, stored, and retrieved within the system while ensuring security and consistency throughout the workflow.

The data flow begins when a user accesses the platform and submits login credentials through the user interface. The Authentication Module receives

the credentials and validates them against the information stored in the database. If the credentials are valid, the system grants access and creates a secure session for the user. Once authenticated, the user can access various functionalities such as viewing maps, submitting translations, managing localization contributions, and monitoring progress.

When a user submits a translation or localization contribution, the request is forwarded from the User Interface Module to the Backend Processing Module. The backend validates the submitted data and checks whether it satisfies the required criteria. After successful validation, the data is passed to the Database Management Module where it is stored securely. The system then updates the contributor's activity records and localization progress information. The processed information is retrieved from the database whenever required and displayed to users through the frontend interface.

D. System Database Design

The database design of the OSM Localization Platform is structured to efficiently manage user information, authentication records, localization data, translation history, map contributions, and system activities. The database follows a relational model that ensures data consistency, integrity, and scalability. Prisma ORM is used to establish relationships between entities and simplify database operations. The design focuses on reducing data redundancy while maintaining efficient access to information through well-defined tables and relationships.

The central entity in the database is the User table, which stores information related to registered users, including user ID, name, email address, encrypted password, role, and account status. Each user can have multiple authentication sessions, localization contributions, translation records, and OCR requests associated with their account. This relationship enables the system to track user activities and manage permissions effectively.

The Account table maintains authentication provider details and user login information. It stores data such as provider name, account identifiers, access tokens, and refresh tokens. This table supports secure

authentication mechanisms and integration with external login providers.

The Verification Token table is responsible for handling account verification and authentication validation processes. It stores verification tokens, email identifiers, and expiration details that help secure user registration and login workflows. These authentication-related tables collectively strengthen system security and protect user information from unauthorized access.

The Contributor Profile table stores information about user contributions, including contribution count, accuracy score, badges earned, and performance metrics. This table enables the system to evaluate contributor activity and encourage participation through performance tracking mechanisms. Each contributor profile is linked to a specific user, maintaining a one-to-one relationship.

The OCR Request table manages information related to uploaded images and extracted text. It contains attributes such as request ID, image URL, extracted text, processing status, creation date, and user references. This table allows the system to maintain records of all OCR operations performed by users and supports future retrieval of processed data.

The Translation History table stores multilingual translation records generated by users. It includes source text, translated text, source language, target language, timestamps, and user references. This structure enables efficient tracking of translation activities and maintains a complete history of localization work performed within the platform.

The Map Contribution table manages geographic localization data contributed by users. It stores location identifiers, geographic coordinates, translated labels, contribution status, validation information, and contributor references. This table supports interactive map visualization and ensures accurate storage of localization-related geographic information.

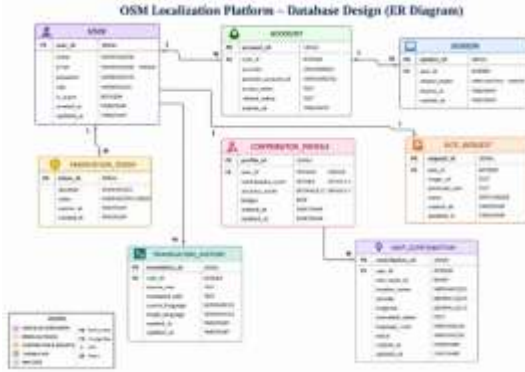


Fig. 3. System Database Diagram

V. METHODOLOGY

The methodology adopted for the OSM Localization Platform follows a structured and modular development approach to ensure efficient localization of map data, secure user management, and seamless interaction with geographic information. The system integrates modern web technologies, database management, authentication mechanisms, and interactive mapping libraries to provide a scalable and user-friendly platform for multilingual map localization.

The development process begins with user authentication and authorization. Users register and log in to the system using secure authentication mechanisms. The authentication module validates user credentials and creates a secure session to ensure that only authorized users can access localization features. This process protects user data and maintains system security throughout user interactions.

After successful authentication, users access the localization dashboard, where they can select a target language and view available map labels requiring translation. The system retrieves source strings and localization data from the database through API services. This information is presented through a user-friendly interface developed using Next.js and React, enabling contributors to participate in translation activities efficiently.

The next stage involves the translation and localization process. Users select map labels or geographic content and provide translated text in the chosen target language. Before storing the translation, the system

performs validation checks to ensure data quality, including checking for empty values, duplicate entries, invalid characters, and formatting inconsistencies. This validation process improves the accuracy and reliability of localized content.

Once validated, the translated content is submitted to the backend through API requests. The backend processes the request, updates localization records, calculates contributor progress, and stores translation data in the database using Prisma ORM. All translation activities are recorded in the translation history module for future reference and tracking. This structured workflow ensures efficient management of multilingual content.

The system then integrates the localized content with the Map Visualization Module. Using Leaflet and MapLibre libraries, translated labels and geographic information are rendered dynamically on interactive maps. Users can zoom, pan, search locations, and view localized map content in real time. This integration enhances user understanding of geographic information and improves accessibility for native language speakers.

The Database Management Module plays a crucial role in storing user information, authentication records, translations, contributor profiles, and map contributions. Prisma ORM manages all database operations, ensuring data consistency, integrity, and efficient retrieval. The modular database design supports scalability and future system enhancements.

VI. RESULTS AND DISCUSSION

The developed OSM Localization Platform was successfully implemented and tested using modern web technologies including Next.js, React, Prisma ORM, Leaflet, and MapLibre. The system achieved its primary objective of providing a secure, scalable, and interactive platform for multilingual map localization and geographic data visualization. The application integrates user authentication, translation management, contributor tracking, and interactive mapping within a unified environment, thereby improving the efficiency of localization activities and enhancing user experience.

The authentication module functioned effectively by allowing users to register, log in securely, and access system resources based on their authorization level. Session management and validation mechanisms successfully prevented unauthorized access while maintaining secure user interactions throughout the application. The implementation demonstrated reliable authentication performance and ensured protection of user information.

The translation management functionality enabled contributors to select target languages and submit localized content efficiently. The system successfully validated translation entries and stored them in the database while maintaining complete translation histories. Contributors were able to monitor their activities and localization progress through the dashboard interface. This feature significantly improved the management and tracking of multilingual localization tasks.

The interactive map visualization component provided dynamic rendering of geographic information using Leaflet and MapLibre libraries. Users were able to perform map operations such as zooming, panning, searching locations, and viewing translated map labels in multiple languages. The localized map interface improved accessibility and demonstrated the effectiveness of integrating geospatial visualization with language localization. The system responded efficiently to user interactions and provided real-time updates of localization content.

The database management module performed efficiently in handling user information, translation records, contributor profiles, authentication data, and map contributions. Prisma ORM simplified data operations and ensured consistency and integrity throughout the system. Database queries were executed efficiently, resulting in fast response times and reliable storage of localization data. The modular database structure also supports future scalability and expansion of the platform.

Performance testing indicated that the application maintained smooth operation under normal usage conditions. The responsive user interface functioned correctly across desktops, tablets, and mobile devices. Optimized API communication, efficient data retrieval

mechanisms, and modern frontend technologies contributed to reduced loading times and improved overall performance. The system successfully handled localization requests without significant delays or processing issues.

From a usability perspective, contributors found the interface intuitive and easy to navigate. The dashboard provided clear information regarding translation statistics, contribution progress, and localization status. The integration of maps and translation workflows into a single platform reduced complexity and eliminated the need for multiple tools, thereby improving productivity and user satisfaction.

The results demonstrate that the proposed system effectively addresses the limitations of existing localization platforms by providing secure authentication, efficient translation management, interactive map visualization, and centralized contributor monitoring. The integration of these components into a unified architecture enhances operational efficiency, improves localization accuracy, and supports collaborative map translation activities. The successful implementation and testing of the platform confirm its suitability for real-world multilingual localization applications and future expansion.

A. Home Page Interface

The Home Page Interface of the OSM Localization Platform, which serves as the entry point for users to access the system and participate in map localization activities. The interface is designed using a modern and responsive layout that provides easy navigation and an engaging user experience. At the top of the page, the platform logo "OSM Localize" establishes the identity of the application, while the navigation menu provides quick access to important sections such as Languages, Contributors, and Live Map. A prominent Contribute button is placed in the top-right corner, encouraging users to join the localization community and begin contributing translations.

The central section of the homepage contains the main headline, "Map the World in Your Language," which clearly communicates the primary objective of the platform. This message emphasizes the importance of making geographic information accessible in regional

languages. Below the headline, a brief description explains how the platform enables contributors to translate OpenStreetMap content into multiple South Asian languages, thereby improving accessibility and promoting digital inclusion. This introductory section serves to motivate users and provide a clear understanding of the platform's purpose.

To facilitate user interaction, the homepage includes two primary call-to-action buttons: "Start Contributing" and "Explore the Map." The Start Contributing button directs users to the translation interface where they can participate in localization activities, while the Explore the Map button allows users to view localized geographic content through an interactive map interface. These buttons provide direct access to the platform's core functionalities and improve overall usability.



Fig. 4. Home page Interface

B. Tamil language map view

This page is one of the core components of the system and is designed to visualize geographic information in multiple regional languages. The interface utilizes OpenStreetMap data along with interactive mapping technologies to display localized place names and geographic labels. The primary objective of this page is to enable users to explore maps in their preferred language and verify the accuracy of translated geographic content.

At the top of the interface, a language selection menu is provided, allowing users to switch between different supported languages such as English, Hindi, Tamil, Telugu, Kannada, Malayalam, Bengali, Marathi, Gujarati, and Punjabi. When a user selects a language,

the system dynamically updates map labels and place names according to the selected language. In the displayed figure, the Tamil language has been selected, and all available geographic labels are rendered in Tamil script. This feature enhances accessibility and enables native language speakers to understand geographic information more effectively.

The left side of the interface contains a search panel that allows users to search for specific locations, cities, landmarks, or geographic entities. The search functionality helps users quickly navigate to desired locations without manually exploring the map. A search button is also provided to initiate location queries and retrieve relevant geographic information from the map database.

The central portion of the page consists of the interactive map display, which presents geographic regions, state boundaries, cities, roads, rivers, and other map elements. Users can perform various interactions such as zooming, panning, and navigating across different regions. The map dynamically updates based on user actions, providing a smooth and responsive browsing experience. Localized place names are displayed directly on the map, allowing users to view geographic content in their chosen language.

On the right side of the interface, map control buttons are available for zooming in, zooming out, and accessing additional map functionalities. These controls improve navigation and enable users to explore geographic areas at different levels of detail. The system ensures that map rendering remains efficient and responsive even when displaying large geographic datasets.

At the bottom of the page, a status indicator informs users about the currently active localization mode. In this example, the notification indicates that all map labels are being displayed in Tamil. This feature helps users verify the selected language and ensures transparency in localization activities.



Fig. 5. Tamil language map view

C. Location Search and Map Navigation Interface

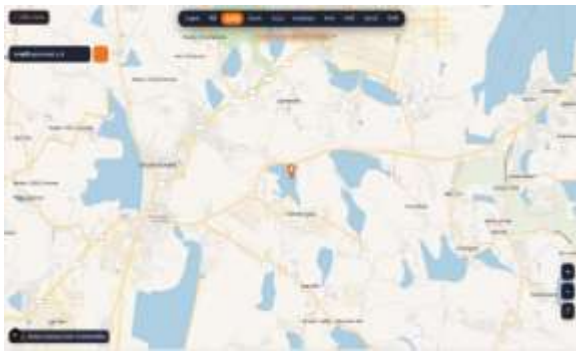


Fig. 6. Location Search and Map Navigation Interface

the Location Search and Map Navigation Interface of the OSM Localization Platform. This page demonstrates the system's capability to search, locate, and display geographic locations using localized map data. The interface is designed to provide users with an interactive environment where they can explore maps in their preferred language while accessing accurate location information.

At the top of the page, a multilingual language selection menu is provided, allowing users to switch between different regional languages. In the displayed figure, the Tamil language is selected, and the system automatically displays geographic labels and place names in Tamil. This functionality improves accessibility for native language users and supports multilingual geographic information systems.

On the left side of the interface, a search box is available where users can enter the name of a city, town, village, landmark, or geographic location. In this example, the user has searched for "காஞ்சிபுரம்

மாவுட்டம்" (Kanchipuram District). After processing the search request, the system locates the corresponding geographic position and displays it on the map. This feature enables users to quickly navigate to specific locations without manually searching through the map.

The center of the page contains the interactive map display, which presents roads, water bodies, boundaries, and other geographic features. A location marker is displayed at the searched destination, clearly identifying the selected area. The marker helps users recognize the exact location and provides a visual reference for navigation and geographic analysis. Users can further interact with the map through zooming and panning operations to obtain more detailed information about surrounding areas.

The right side of the interface includes navigation controls such as zoom-in and zoom-out buttons. These controls allow users to adjust the map scale according to their requirements. The map dynamically updates based on user interactions, ensuring a smooth and responsive navigation experience.

VII. CONCLUSION

The OSM Localization Platform was successfully designed and developed as a modern web-based application that supports multilingual map localization and interactive geospatial visualization. The system effectively integrates user authentication, translation management, contributor tracking, database management, and map rendering into a single unified platform. By utilizing advanced technologies such as Next.js, React, Prisma ORM, Leaflet, and MapLibre, the platform provides a secure, scalable, and user-friendly environment for managing localized geographic information.

The developed system successfully addresses the limitations of traditional localization platforms by providing a centralized solution for translation management and map visualization. Users can securely access the platform, contribute translations, monitor localization progress, and interact with geographic data through an intuitive interface. The multilingual support implemented within the system

enables map labels and geographic information to be displayed in regional languages, thereby improving accessibility and usability for native language speakers.

The integration of interactive mapping technologies enhances the user experience by allowing real-time navigation, location search, zooming, panning, and visualization of localized content. Furthermore, the use of Prisma ORM ensures efficient database operations and maintains data consistency, integrity, and reliability. The modular architecture adopted in the project improves maintainability and provides flexibility for future enhancements and scalability.

VIII. LIMITATIONS

Although the OSM Localization Platform provides an effective solution for multilingual map localization and geographic data management, certain limitations exist within the current implementation. These limitations provide opportunities for future improvements and enhancements.

The system currently depends on the availability and accuracy of OpenStreetMap data. Any missing, outdated, or incorrect geographic information in the source map may affect the quality and accuracy of localized content displayed to users. Since the platform relies on community-contributed map data, inconsistencies may occasionally occur in geographic labels and location information.

The localization process is largely dependent on manual user contributions. The quality of translations may vary depending on the language proficiency and experience of contributors. The current system does not include advanced Artificial Intelligence (AI) or Machine Learning (ML) mechanisms for automatic translation validation, quality assessment, or suggestion generation. As a result, human review may be required to ensure translation accuracy.

Another limitation is that the platform currently supports only a limited set of regional languages. While the system architecture allows future expansion, the present implementation focuses primarily on selected South Asian languages. Additional languages

and localization standards would require further development and testing.

The system requires a stable internet connection for accessing map tiles, authentication services, and database resources. Users operating in low-connectivity environments may experience slower performance or limited access to certain functionalities. Offline localization and map viewing features are not included in the current version of the application.

IX. FUTURE ENHANCEMENTS

The OSM Localization Platform provides a strong foundation for multilingual map localization and geographic data management. However, several advanced features can be incorporated in future versions to improve system functionality, performance, and user experience.

One of the major enhancements that can be implemented is the integration of Artificial Intelligence (AI) and Machine Learning (ML) techniques for automatic translation suggestions. AI-powered translation models can assist contributors by providing accurate language recommendations, reducing manual effort, and improving translation consistency across different languages.

The platform can also be extended to support real-time collaborative localization, allowing multiple contributors to work simultaneously on the same geographic dataset. This feature would increase productivity and accelerate the localization process, especially for large-scale mapping projects.

Another significant enhancement is the development of dedicated mobile applications for Android and iOS devices. Mobile accessibility would enable users to contribute translations, review map labels, and access localization features directly from smartphones and tablets, thereby increasing community participation.

REFERENCES

- [1] S. Brin and L. Page, "The anatomy of a large-scale hypertextual web search engine," *Computer*

- Networks and ISDN Systems*, vol. 30, no. 1–7, pp. 107–117, 1998.
- [2] S. Coast, “OpenStreetMap: Goals and Challenges,” *Proceedings of the State of the Map Conference*, Manchester, UK, 2010.
- [3] M. Haklay and P. Weber, “OpenStreetMap: User-generated street maps,” *IEEE Pervasive Computing*, vol. 7, no. 4, pp. 12–18, 2008.
- [4] V. Agafonkin, “Leaflet: An Open-Source JavaScript Library for Mobile-Friendly Interactive Maps,” 2024.
- [5] R. Fielding, “Architectural Styles and the Design of Network-Based Software Architectures,” Doctoral Dissertation, University of California, Irvine, 2000.
- [6] D. Hardt, “The OAuth 2.0 Authorization Framework,” *Internet Engineering Task Force (IETF) RFC 6749*, October 2012.
- [7] J. Resig, B. Bibeault, and J. Paxton, *Secrets of the JavaScript Ninja*, 2nd ed., Manning Publications, 2016.
- [8] T. Berners-Lee, R. Fielding, and H. Frystyk, “Hypertext Transfer Protocol – HTTP/1.1,” *IETF RFC 2616*, 1999.
- [9] I. Sommerville, *Software Engineering*, 10th Edition, Pearson Education, 2016.
- [10] R. S. Pressman and B. R. Maxim, *Software Engineering: A Practitioner’s Approach*, 9th Edition, McGraw-Hill Education, 2020.
- [11] M. De Smith, M. Goodchild, and P. Longley, *Geospatial Analysis: A Comprehensive Guide to Principles, Techniques and Software Tools*, 6th Edition, Troubador Publishing, 2021.
- [12] A. Graser and G. Olaya, “Processing GIS Data with OpenSource Software,” *International Journal of Geographical Information Science*, vol. 32, no. 5, pp. 905–925, 2021.
- [13] N. Singh and P. Sharma, “Multilingual Geographic Information Systems for Regional Language Support,” *International Journal of GIS Applications*, vol. 14, no. 3, pp. 45–58, 2022.
- [14] K. Verma and S. Gupta, “Web-Based Map Localization Using OpenStreetMap Data,” *International Journal of Computer Applications*, vol. 183, no. 25, pp. 12–20, 2023.
- [15] A. Kumar, R. Patel, and M. Shah, “Interactive Geospatial Visualization Using Modern Web Technologies,” *Journal of Geographic Information Systems*, vol. 15, no. 2, pp. 101–114, 2024.